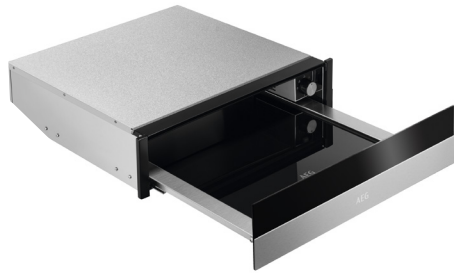


# Built-In 14cm Warming Drawer



| Technical Information                 |                                 |
|---------------------------------------|---------------------------------|
| Colour                                | Stainless Steel                 |
| Dough proving                         | Dough Proving Setting           |
| Defrost                               | Yes                             |
| Control type                          | Rotary                          |
| Timer                                 | N/A                             |
| Electrical supply voltage @ Frequency | 220 - 240 V @ 50/60 Hz          |
| Maximum input power (watts)           | 800 W                           |
| Amperage required                     | 13 A                            |
| Mains lead length                     | 1.5 m                           |
| Approval directives                   | WEEE                            |
| Guarantee                             | 2 Year Manufacturer's Guarantee |

| Dimensions & packaging    |                          |
|---------------------------|--------------------------|
| Product dimensions metric | H140mm x W595mm x D535mm |
| Product weight            | 19kg                     |
| Product packed dimension  | H225mm x W650mm x D610mm |
| Product packed weight     | 19kg                     |