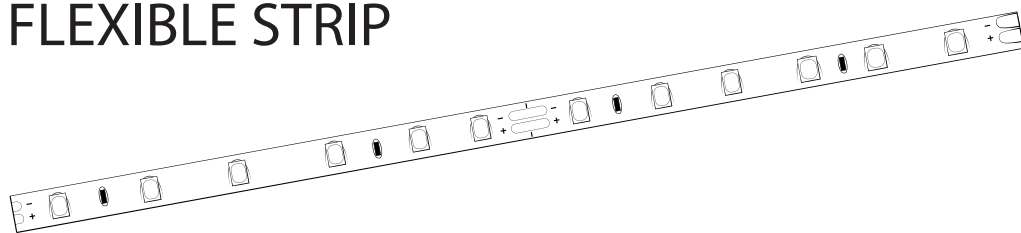


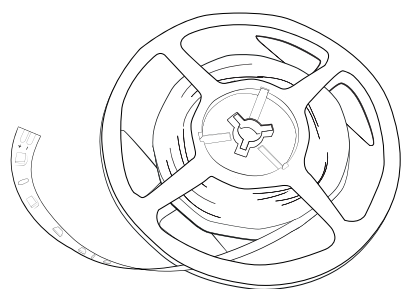
INSTALLATION INSTRUCTIONS



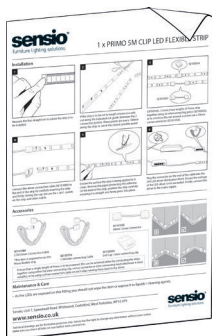
CODE: SE10755C0/W0/N0

IMPORTANT: please read these instructions before commencing installation and retain for future reference.

Components

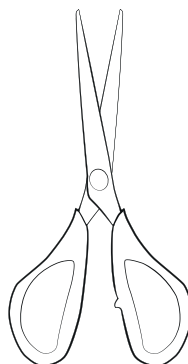


1x 5m Primo Flexible Strip



Fitting Instructions

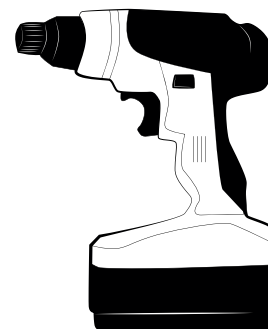
Tools Required



Scissors



6mm Drill Bit



Power Drill

Important safety information

Please read these instructions carefully before attempting to install this product. It is advisable to keep these instructions in a safe place for further reference.

We recommend that you consult a qualified electrician. All electrical installations must be carried out in accordance with current IEE wiring regulations (BS7671).

These products must not be modified, if any modifications are made it may invalidate the warranty and may render the product unsafe. These LED lights operate low voltage (24V).

Do not wire the individual LED light fittings directly to the mains. This fitting is for indoor use only (IP20 rated).

- If in doubt installation must be carried out by a qualified electrician
- Install on smooth flat surface(s) only
- The strip can be cut and reconnected every 100mm
- The wattage is 18W per 5m reel
- In order to run this product you will need a 2.5m driver connection cable (SE101080)
- Class III safety extra low voltage (SELV)

Safety instructions

1. Before commencing installation or maintenance, please clear the surrounding area of any trip hazards or sharp objects.
2. This product is only suitable for connecting to a 24V DC supply.
3. The light should be mounted onto a secure, clean surface using the instructions provided.
4. Never exceed the total output of the LED Driver.
5. Suitable for furniture lighting.
6. If an LED expires the fitting must be replaced.

Waste Electrical & Electronic Equipment (WEEE)

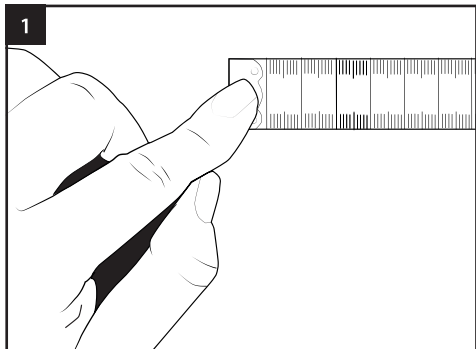
The symbol on the product, or on the document accompanying the product, the crossed out whee bin symbol, indicates that this product may not be treated as household waste. Instead it shall be handed over to the applicable collection point for the recycling of electrical and electronic waste.



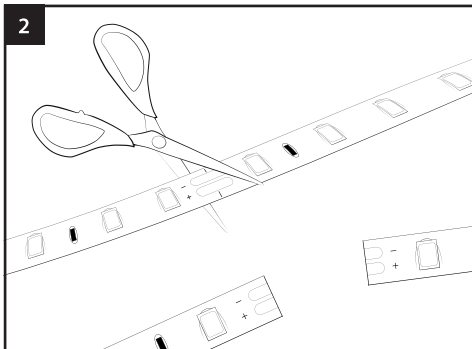
RoHS
Compliant ✓



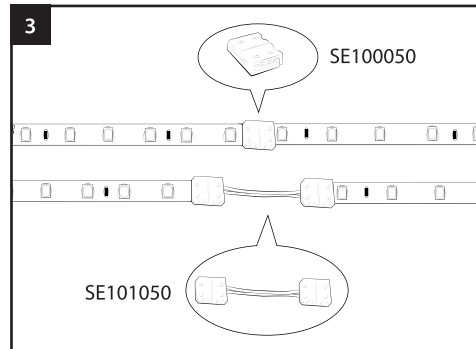
Installation



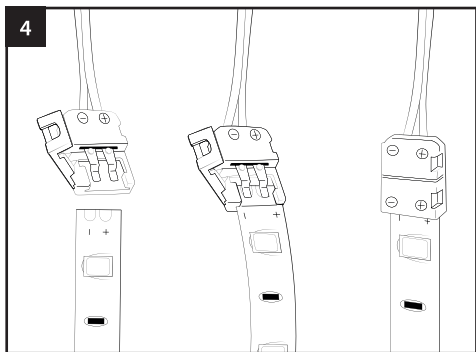
1 Measure the length of each area to which the strip is to be installed.



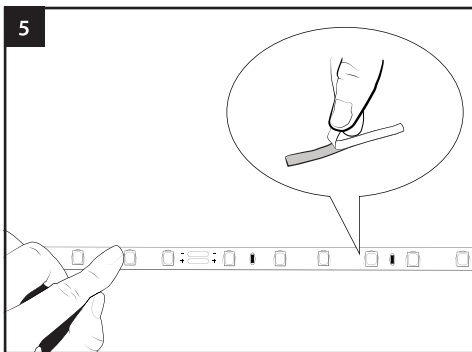
2 If the strip is to be cut to length ensure you only cut along the indicated cut guide (between the 2 connection points). These points are every 100mm along the strip so cut at the closest possible point.



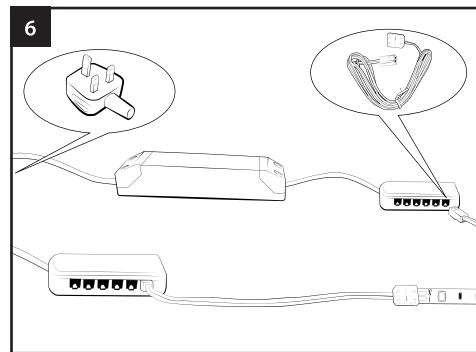
3 OPTIONAL: Connect two lengths of Primo strip together using an interconnecting piece (SE100050), or to continue the run around a corner use a 50mm corner connector (SE101050).



4 Connect the driver connection cable (SE101080) to the end of the strip by carefully inserting the strip and firmly closing the cap. Ensure the + and - points on the strip and cable match.

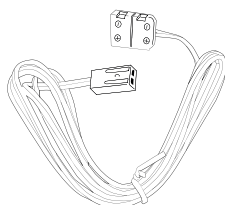


5 Ensure the surface to which the strip is being applied is clean. Remove the paper protecting the adhesive on the back of the strip, position the strip carefully ensuring it is straight and firmly press into place.



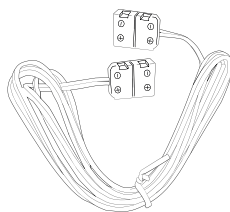
6 Plug the connector on the end of the cable into the 24V LED driver distribution block. Ensure the wattage of the LED driver is not exceeded. Finally, connect the driver to the mains supply.

Accessories

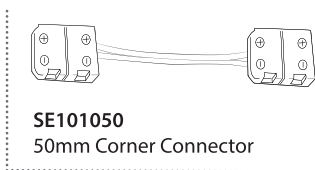


SE101080
2.5M Driver Connection Cable

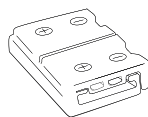
*This item is required to run the Primo flexible strip



SE100750
1.5M Inter-connecting Cable

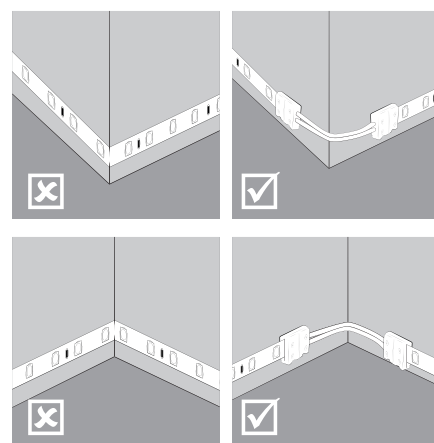


SE101050
50mm Corner Connector



SE100050
End Cap / Inter-connecting clip

If more than a single length of Primo is to be powered, this can be achieved either by connecting the strips together using either the inter-connecting clip, corner connector or inter-connecting lead (whichever is most suitable), or by using a driver connection cable on each strip running these back to the driver.



Maintenance & Care

- As the LEDs are exposed on this fitting you should not wipe the item or expose it to liquids / cleaning agents.