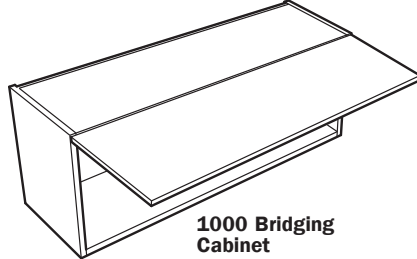
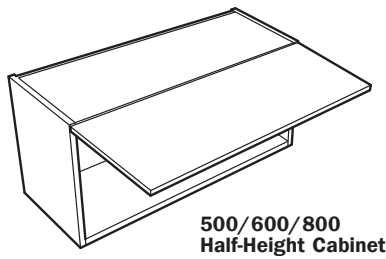
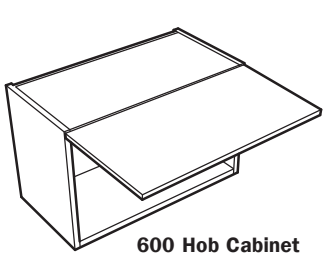


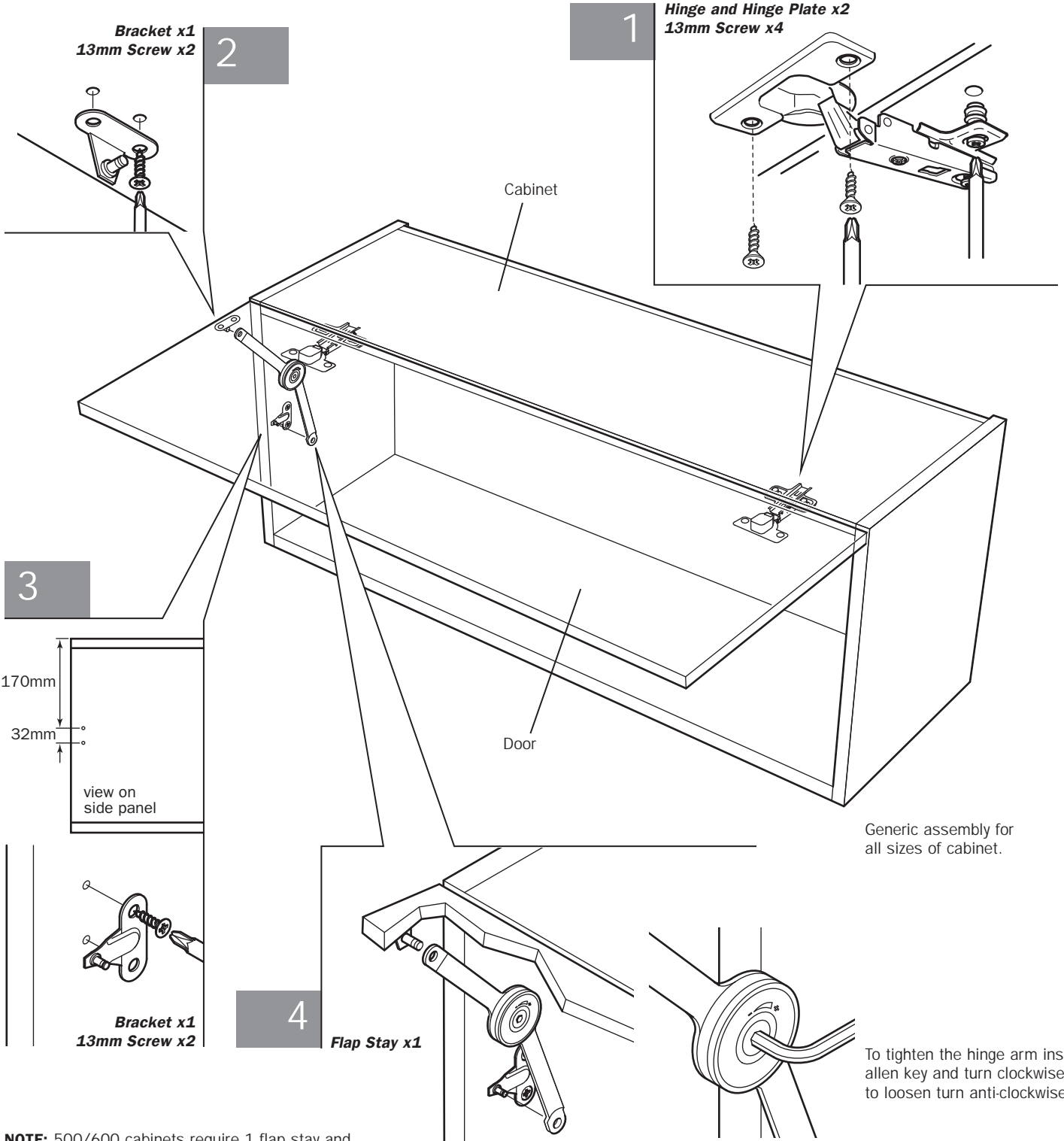
Hob Wall/Half-Height Wall/Bridging Cabinets



NOTE: Additional fittings are supplied for the kitchen installation.

Assembly

This cabinet must be fixed into position prior to door fixing. Refer to cabinet wall fixing, see **Section 1, sub-section 10.**



NOTE: 500/600 cabinets require 1 flap stay and 800/1000 cabinets require 2 flap stays.