

Thank you for purchasing this SycamoreLED.com product.

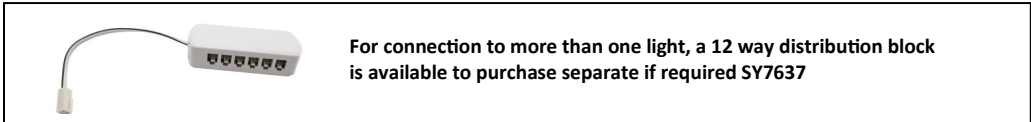
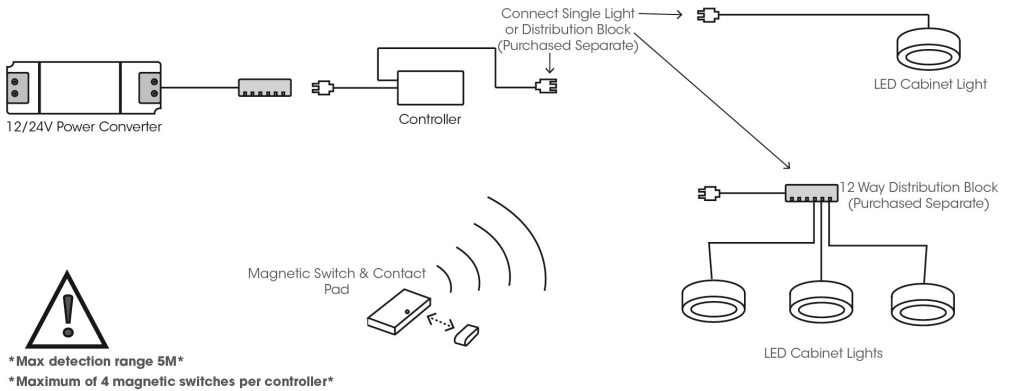
Please make sure instructions are followed carefully prior to and during installation and product is not altered, otherwise warranty may not be valid.
 For technical support or warranty information please visit www.sycamoreLED.com, or call our dedicated technical helpline +44 (0) 113 286686.

IMPORTANT—Please read prior to installation

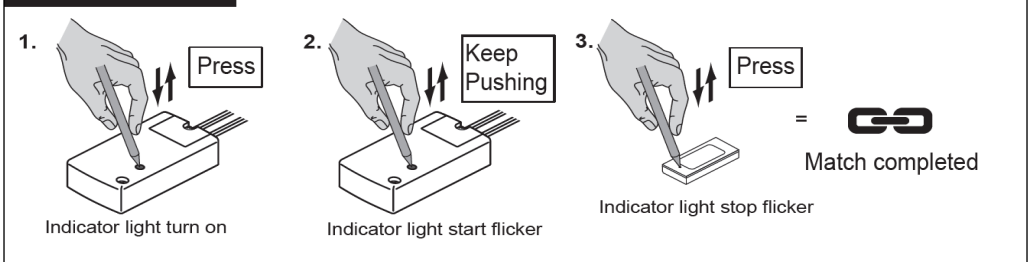
- 1) Please read these instructions carefully before commencing any work
- 2) This product must be installed by a qualified electrician in accordance with the current IEE wiring regulations
- 3) To prevent electrocution switch the power off at the mains supply before installing or maintaining this fitting
- 4) Ensure others cannot restore the electrical supply without your knowledge
- 5) The PSU must be rated 12VDC or 24VDC and be compatible with the pre-wired connector system of this product
- 6) Never exceed the wattage stated

INSTALLATION & OPERATION

1) Connect as per line drawing.



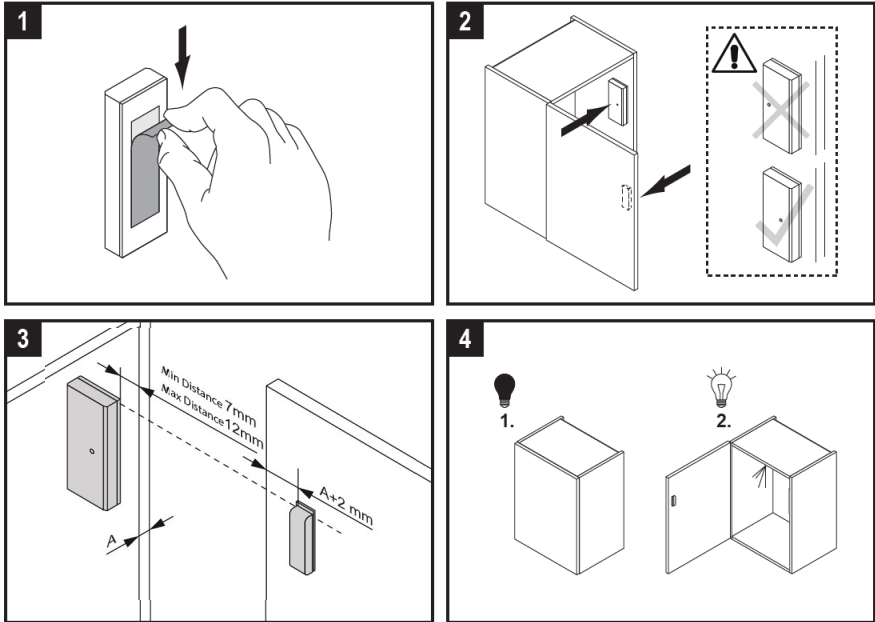
Matching Method



- 1) Press the pairing key once and the red indicator light will illuminate.
- 2) Press and hold the pairing key until the indicator light starts to flash then release.
- 3) Press the button on the reverse side of the magnetic switch and pairing will be achieved.
- 4) If you are pairing additional switches ensure that the previously paired switches are in the off position before pairing another switch. (off position = magnetic switch and contact pad are connected together)

INSTALLATION & OPERATION

- 1) Once paired install the magnetic switches into the cabinet
- 2) The switch itself is secured onto the furniture using the adhesive pad provided on the back.
- 3) Locate switch within cabinet as per diagram below
- 4) Lights are operated by movement of door.
- 5) A maximum of four magnetic switch & contact pads can be paired to a single sensor controller.
- 6) One switch per door (cannot be used as a double door switch)



GENERAL

- 1) Sensor distance: 7—12mm
- 2) Maximum detection range from magnetic switch to sensor controller 5m
- 3) Maximum 4 magnetic switch & contact pads per single sensor controller

Rated voltage/V	Max Current	Max wattage
Operates on 12v	5 A	60w (12v)
Operates on 24v	5 A	120w (24v)



SycamoreLED.com
LS26 8XT

Technical helpline : 0113 2866686

*Please email sales@sycamoreled.com to register your product