

# LAMONA

At the heart of the kitchen

LAM2377

LAM2378

**60cm / 80cm**

**Premium Canopy Cooker Hood**



- Please read the Installation instructions to ensure safe fitting and use of the appliance.
- The appliance should be fitted by a suitably competent and qualified person.
- Please keep these instructions in a safe place for future reference.
- Danger of suffocation, keep packaging material away from children.

## User Instructions

ISSUE v1.0 03022023

Register  
my appliance

[www.howdens.com/appliance-registration](http://www.howdens.com/appliance-registration)



# Free 3 year guarantee

**Call now<sup>1</sup>**

Within the UK:

**0333 010 0009**

Within Republic of Ireland:

**01525 5752**

Alternatively, visit [www.howdens.com/appliance-registration](http://www.howdens.com/appliance-registration)

# LAMONA

**3 year guarantee available.  
Register your appliance within 90 days<sup>2</sup>**

**By registering your appliance and creating an account, we will keep you up to date with the latest product information and notify you immediately of any important product updates**

<sup>1</sup>Lines are open Monday to Friday 9am to 5pm. Calls will be charged at your local rate and may be recorded and monitored for training and quality purposes.

<sup>2</sup>So that in the event of an important product update, or recall, we can contact you.

**Register**   
**my appliance**

---

# Welcome

Dear Customer,

Congratulations on your choice of LAMONA domestic appliance.

- Please read these instructions carefully before use to ensure safe and economical operation of the appliance.
- Please keep these instructions in a safe place for your future reference and for future owners.
- If you have any questions, or if you are not sure about any information contained within this booklet, please contact us - details at the end of the booklet.

This appliance is intended to be used in household and similar domestic applications, see guarantee page for definition of domestic use.

The **CE** and **UKCA** marks on this product, confirm compliance to all relevant UK and European safety, health and environmental requirements which are applicable in legislation for this product.

---

## The following symbols are used throughout this manual:



Warning for electric shock.



Warning for hazardous situations with regard to life and property.



Warning for hot surfaces.



Important / note for operating the system correctly.

### Main points for use

#### Latest in extraction technology

- 3 speed settings
- Intensive mode for faster extraction
- Built-in illumination



---

# Contents

## **Warning and safety information.....p.5**

Correct application.....p.5

Safety with children and vulnerable people .....p.5

General Safety .....p.5

Safety when working with electricity .....p.5

Electrical connection .....p.6

Danger of toxic fumes .....p.6

## **LAM2377/78 Premium canopy cooker hood ....p.7**

Main unit overview .....p.7

Control panel overview.....p.7

## **Before using for the first time .....p.8**

Metal surfaces and condensation.....p.8

## **Operating the cooker hood .....p.8**

Control panel.....p.8

## **Care and maintenance .....p.9**

General cleaning .....p.9

Grease filter(s) .....p.9

Carbon filters - supplied separately .....p.10

Replacing lamps.....p.10

## **Trouble shooting.....p.11**

## **Technical specification.....p.12**

## **Service and repairs .....p.13**

## **Caring for the environment .....p.13**

Disposing of the packaging material .....p.13


Disposing of your old appliance.....p.13

## **Guarantee .....p.14**

Serial number .....p.14



## Warning and Safety Information

 Please read these instructions carefully. The manufacturer is not responsible if an incorrect installation and use causes injuries and/or damage. Always keep these instructions with the appliance for future reference.

**Please take appropriate care when installing, maintaining, cleaning and operating this appliance.**

### Correct application

- This appliance is intended for domestic extraction only. It must not be used for other purposes. Commercial and any other use will be considered improper and will void the guarantee.
- The manufacturer shall not be liable for any damage caused by improper use, installation or handling errors.
- The appliance may be used by people with reduced physical, sensory or mental capabilities, or lack of experience or knowledge, if they are supervised whilst using it or have been shown how to use it safely and recognise and understand the consequences of incorrect operation.

### Safety for children and vulnerable people

- This product is not intended to be used by persons with physical, sensory or mental disorders or unlearned or inexperienced people (including children), unless they are supervised by a person who will be responsible for their safety or who will instruct them accordingly in the use of the product.
- Electrical appliances can be dangerous to children. Keep children away from the product when it is operating.
- Please supervise children in the vicinity of the appliance and do not let them play with it.
- The packaging materials will be dangerous for children. Keep the packaging materials away from children. Please dispose of all parts of the packaging according to environmental standards.
- Cleaning and user maintenance shall not be made by children unless they are at least 8 years old and supervised.

### General safety

- Do not operate the product if the power cable is damaged. Call a qualified service agent.
- Do not carry out any repairs or modifications on the product. However, you may remedy some problems that do not require any repairs or modifications. See page 11 "Trouble shooting".
- Never wash down the product with excessive water, as there is the risk of electric shock.
- Never use the product when your judgement or coordination is impaired by the use of alcohol and / or drugs.
- The appliance must be disconnected from the mains during installation, maintenance, cleaning and repair procedures.
- DO NOT flambé under the cooker hood.
- Keep ventilation slots clear of obstructions as this may cause premature failure of the appliance.
- Do not look directly into the lamps through optical devices - binoculars, magnifying glasses etc.
- Do not trap the mains cable and do not route it over surfaces which may become hot. The cable insulation may melt and cause a fire as a result of a short circuit.
- Make sure the product function buttons are switched OFF after every use.




**Take care:** Accessible parts may become hot when used with cooking appliances.


### Safety when working with electricity

- In case of any damage, switch off the product and disconnect it from the mains. To do this, turn off the fuse at the fuse box.

## Electrical connection


 Please follow the instructions and observe the technical data in the installation manual, this technical safety section and the technical specification on page 12 of this manual.

This product must be installed by a qualified person in accordance with the regulations in force, otherwise, the guarantee may become void.

-  Before installing the appliance, check for any external visible damage.  
**Do not install or use if damaged.**

- Before connecting the machine, ensure that the information on the data plate (fuse rating, voltage and frequency) matches the mains electricity supply. If in any doubt, consult a qualified electrician. The fuse rating can be found on page 12.
- Safety of this appliance can only be guaranteed when correctly earthed. It is essential that this standard safety requirement is met. If in any doubt, please have the wiring system of the building tested by a qualified electrician.


**LAMONA cannot be held liable for the consequences of an inadequate earthing system (e.g. electric shock).**

 Do not connect this cooker hood to the mains electricity supply through...

- a multi-socket adapter,
- an extension lead or similar;
- a timing device.
- The electrical connection must comply with current local and national safety regulations (BS 7671 in the UK).
- The appliance must be connected to fixed wiring via the use of a double pole switched fuse outlet with at least 3mm contact separation. The isolation switch must be accessible after installation.
- Reliable and safe operation of this appliance can only be assured if it has been connected to the mains electricity supply.
- The appliance must not be used with energy-saving plug devices. The appliance will not function correctly and may overheat.



- If the mains cable needs to be replaced, this must be done by a suitably qualified person.

 The electrical socket must be easily accessible after installation so that the machine can be disconnected from the electricity supply if necessary.

**Repair procedures must always be performed by qualified service agents.** The manufacturer shall not be held responsible for damages arising from procedures carried out by unauthorised persons. **This may void the guarantee.**

- Check that the appliance is working correctly.

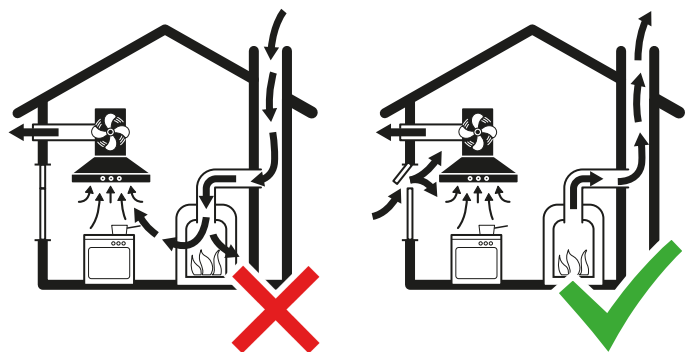
Faulty components must only be replaced by genuine original LAMONA spare parts. Only when these parts are fitted can LAMONA guarantee the safety standards of the machine.

## Danger of toxic fumes

Care should be taken when using the cooker hood in the same room or same area of the house at the same time as another heating appliance that depends on the air from the room.

- If there is insufficient air, an under pressure will occur. The heating appliance may be starved of oxygen. This impairs combustion. Harmful gases could be drawn back into the room.
- Sufficient ventilation must be maintained by air inlets which must not be blocked, e.g. in windows, doors and outside wall vents.

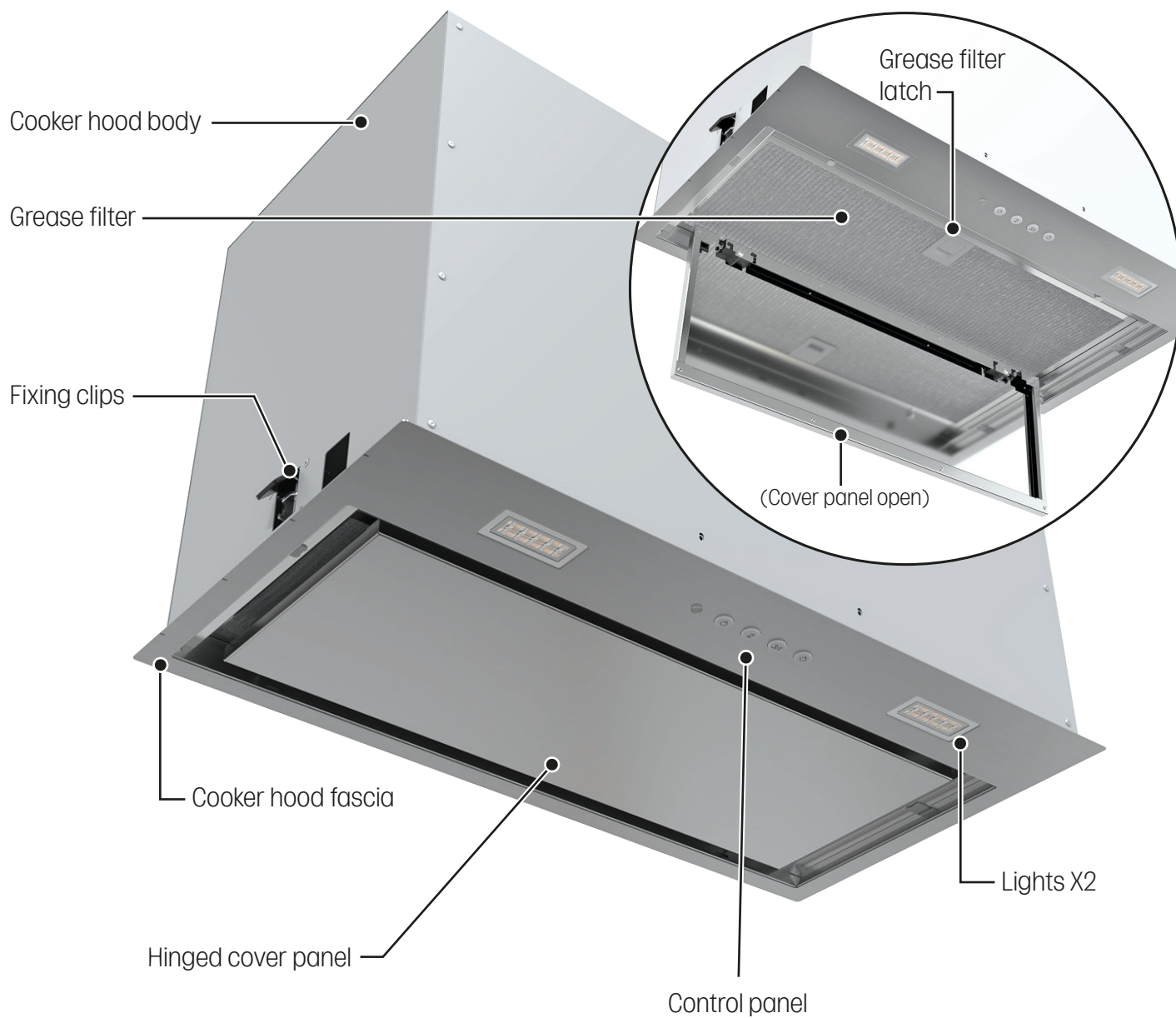
If the cooker hood is being operated in recirculation mode, whereby the air is redirected into the room, the above restrictions do not apply.



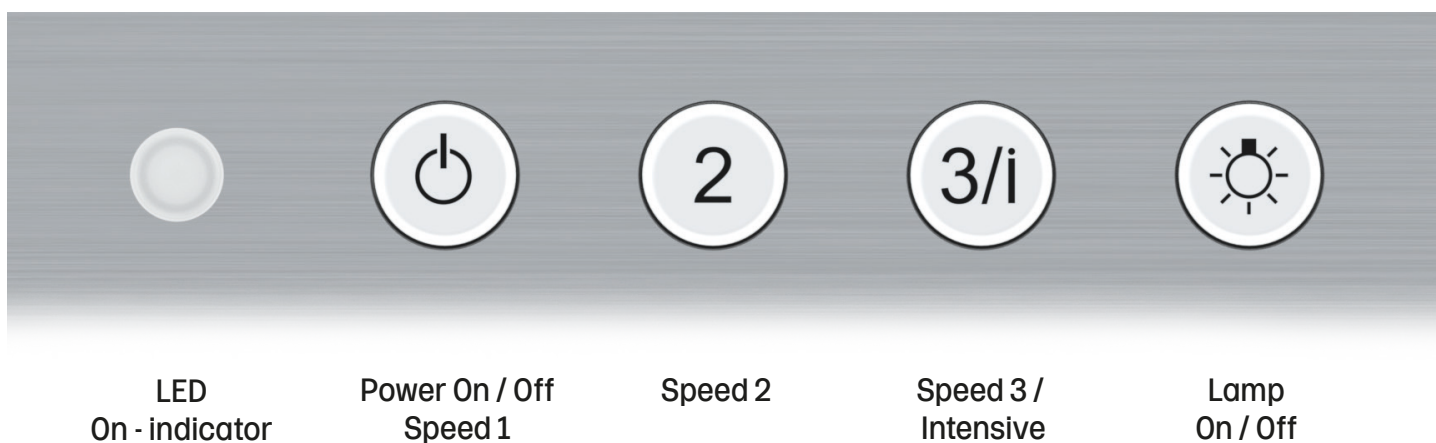


# LAM2377 / 78 Premium canopy cooker Hood

## Main unit overview



## Control panel overview



## Before using for the first time



Please read this booklet thoroughly before using the machine.

- Make sure that you have removed all packaging, wrappings, stickers and films from the cooker hood.
- It is recommended that you clean the cooker hood's surface before using for the first time.

## Metal surfaces and condensation

When cooking with pans using a large water content, large quantities of vapour and steam can be produced very quickly. This steam may condense onto the cold metallic surfaces of the cooker hood and even the splash back are if tiled / glazed etc. **This is not a fault with either the hob or cooker hood if correctly installed.**

The amount of this condensation on any particular surface will depend many factors including:

- The ambient temperature in the kitchen.
- Related ambient temperature of metal surfaces.
- General ventilation with the kitchen.
- The type of food being cooked.
- Duration of cooking.







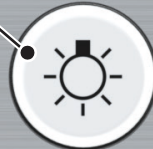




 Using lids on pans can help reduce the amount of steam being released and subsequent condensation.

## Operating the cooker hood

### Control panel


Illuminates; green, orange, red and red flashing


**Note:** The lamp is not controlled by the Power On / Off button.

|   |   |  |   |   |
|---|---|--|---|---|
|  |                                        |                             |   |  |
| <b>LED On - indicator</b>   | <b>Power On / Off Speed 1</b>   | <b>Speed 2</b>   | <b>Speed 3 / Intensive</b>  | <b>Lamp On / Off</b>  |
|   | Press to switch cooker hood On / Off.  | Press to activate speed 2.  | Press to activate speed 3. <br><br>Press and hold for 2 seconds to activate intensive.  | Press to switch on. Repeat pressing will switch the lamp on or off.                   |




## Care and maintenance

 Before cleaning or attempting any type of maintenance, always make sure that the electricity supply is disconnected.

 To avoid the possibility of fire, adhere strictly to all of the recommendations included in this booklet, paying particular attention to the grease filters to ensure grease deposits do not build up.

 **CAUTION:** Accessible parts may become hot when used with cooking appliances.



 **If the power cable is cut or damaged in any way, disconnect the cooker hood from the electricity supply and call the service number at the rear of this booklet or a suitably qualified repairer.**

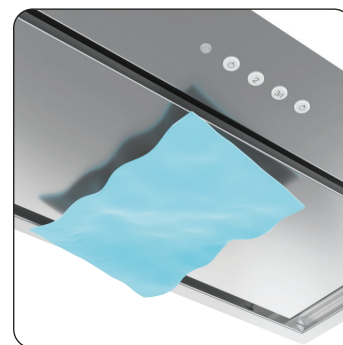
The manufacturer declines all liability in cases where the instructions for the appropriate installation, maintenance and use of the cooker hood are not observed.

### General cleaning

Wipe the external surfaces of the appliance regularly using warm water and a mild detergent. NEVER use abrasive cleaners, or strong household cleaners as they may affect the appearance of the product and / or artwork on the control panel, voiding the manufacturer's warranty.

#### Stainless steel

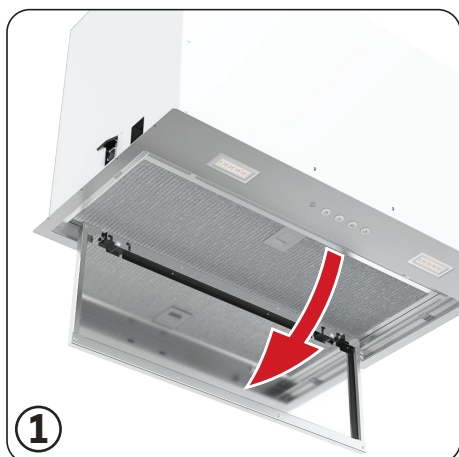
- The stainless steel must be cleaned regularly to ensure long life. Dry with a clean soft cloth. Specialised stainless steel cleaning fluid may be used.
- Ensure that wiping is done along the grain of the stainless steel to prevent any unsightly criss-cross patterns appearing.



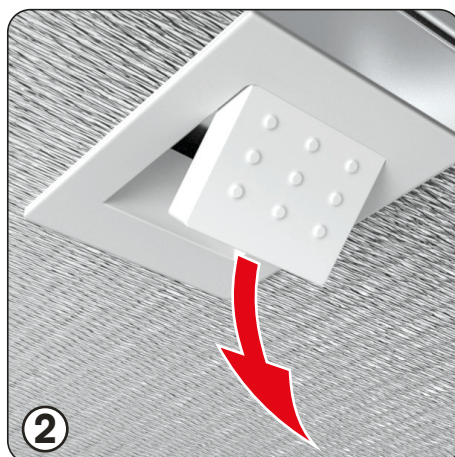
#### Grease filter(s)

- Grease filters should be cleaned every three months or sooner depending on the type of cooking being performed.
- The grease filter is a metallic material and should be washed regularly using a neutral detergent.
- Grease filters should be washed separately to crockery and kitchen utensils.
- Thoroughly dry the grease filter before reinstalling on the cooker hood.

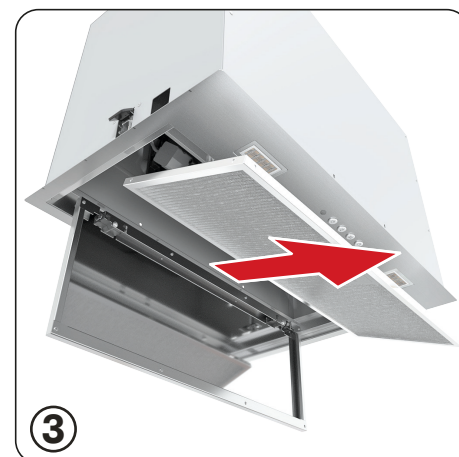
#### To remove the grease filter(s):



① Open cover



② Pull down latch to unlock



③ Remove grease filter



Install by reversing the process.

## Carbon filters - supplied separately

**⚠ Carbon filters are only required when appliance is installed in recirculation mode.**

**⚠ Before attempting to change or fit carbon filters, ensure power to the cooker hood is switched off.**



- Carbon filters have a limited life. We advise changing them when there is a noticeable drop in performance. The intervals between changing the filters will depend entirely upon the amount of cooking done, but on average a carbon filter will last about 3 months.
- Replacement carbon filters may be purchased from your local Howdens depot or online. **Part No: LAM2004**

To gain access to the carbon filters, first remove the grease filter(s):

**⚠ Carbon filter does not fit to the outlet on top of the product!**



- Remove the old carbon filters by rotating the filter (1).
- Install by reversing the process.  
Refit the grease filter(s), then reconnect the power supply.

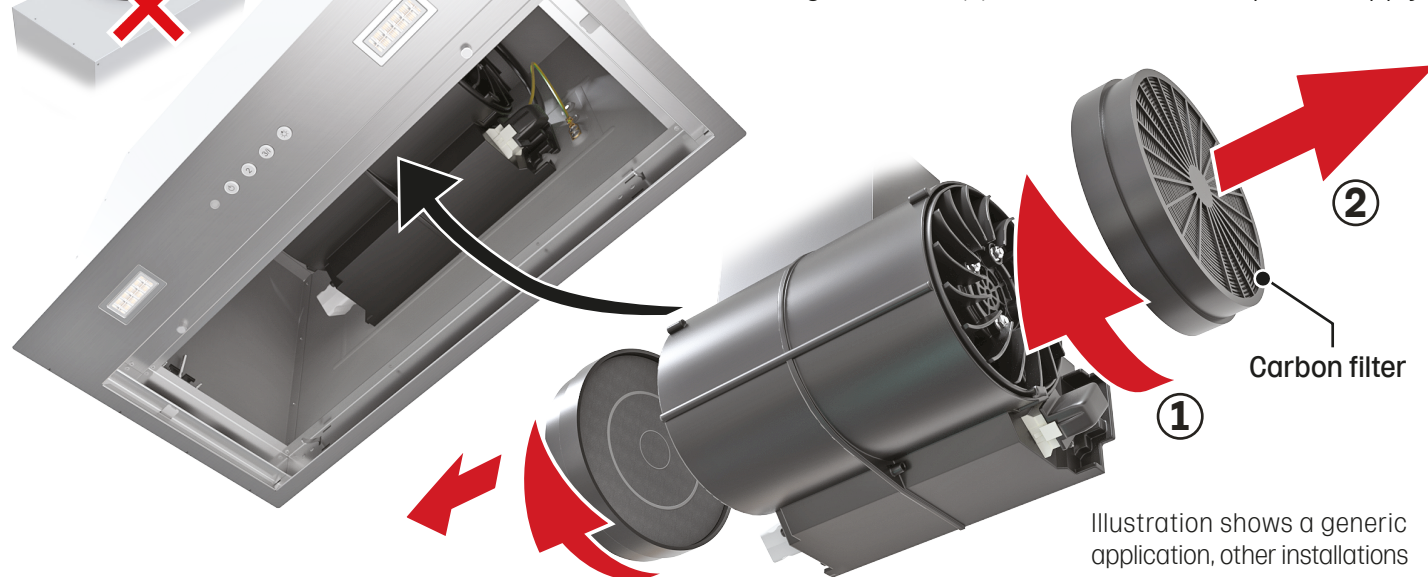


Illustration shows a generic application, other installations are similar.

## Replacing lamps

The lamps on this appliance are **service fix only** and replacement should be carried out by an authorised service agent. The cooker hood is fitted with LED lamps which will give many years of reliable service. In the event of the lamp(s) failing, please call the service number.

The lamps on this appliance should only be used during operation of the cooker hood. They should not be left on permanently and used as a main lighting source. The cooker hood is for domestic use only.



|   |                                   |  |
|---|-----------------------------------|--|
| Only use replacement lamps of this type | <b>LED</b>                        |  |
|   | Rectangle LED lamp 2 x 1.5W 4000K |  |
|   | AC 220-240V                       |  |



## Trouble shooting

### What might be the cause of...?



Before calling for advice please use this checklist. If the problem persists after completing these checks, please call the LAMONA Service Line.

| PROBLEM SOLVING  |   |  |
|--|---|--|
| Symptoms   | Possible cause  | Solutions  |
| Light functions but fan does not.  | <ul style="list-style-type: none"> <li>Motor temperature has exceeded its limit and the thermal fuse has tripped.</li> </ul>  | <ul style="list-style-type: none"> <li>Switch off the cooker hood and allow it to cool down and the fuse will auto reset.</li> <li>Check filter conditions and clean or replace as required.</li> </ul>  |
| Lamps fail to operate.   | <ul style="list-style-type: none"> <li>Lamps internal fault.</li> <li>Power cut (cooker hood will not function).</li> <li>Lamp has passed its usable life.</li> </ul>   | <ul style="list-style-type: none"> <li>Call an authorised service agent.</li> </ul>  |
| Motor is on but fan is not as efficient as usual.  | <ul style="list-style-type: none"> <li>Clogged filters can reduce the product's efficiency. Check the grease and carbon filters, (if fitted), also ensure any venting is not obstructed.</li> </ul>   | <ul style="list-style-type: none"> <li>Clean the grease filters with warm water and mild detergent.</li> <li>Replace carbon filters, (if fitted).</li> </ul>   |
| The cooker hood works normally but smells linger.  | <ul style="list-style-type: none"> <li>Clogged filters can reduce the product's efficiency and may cause unwanted smells.</li> </ul>  | <ul style="list-style-type: none"> <li>Clean the grease filter(s) with warm water and mild detergent.</li> <li>Replace carbon filters, (if fitted).</li> </ul>   |
| Product does not operate.  | <ul style="list-style-type: none"> <li>The mains fuse may be defective or has tripped.</li> </ul>   | <ul style="list-style-type: none"> <li>Check fuses in the fuse box. If necessary, replace or reset them.</li> </ul>  |
|  | <ul style="list-style-type: none"> <li>Product is not connected properly.</li> </ul>  | <ul style="list-style-type: none"> <li>Check all power connections.</li> </ul>   |
| The cooker hood is noisy.  | <ul style="list-style-type: none"> <li>Incorrect sized ducting has been installed.</li> </ul>   | <ul style="list-style-type: none"> <li>Install the correct size ducting.</li> </ul>  |
|  | <ul style="list-style-type: none"> <li>Ducting and / or outlet is blocked or restricted.</li> </ul>   | <ul style="list-style-type: none"> <li>Ensure ducting and outlet are free from obstruction.</li> </ul>   |
|  | <ul style="list-style-type: none"> <li>Minimum number of 90° ducting bends has been exceeded during installation.</li> </ul>  | <ul style="list-style-type: none"> <li>Check that the installation does not exceed the minimum recommended number of 90° bends.</li> </ul>   |
|  | <ul style="list-style-type: none"> <li>The hood is not secured to the wall correctly in accordance with the installation instructions.</li> </ul>   | <ul style="list-style-type: none"> <li>Check that the hood is installed correctly to the wall.</li> </ul>  |
|  | <ul style="list-style-type: none"> <li>A cable or building material has fallen into the fan area.</li> </ul>  | <ul style="list-style-type: none"> <li>Check the fan area is clear of any cabling and debris.</li> </ul>   |
|  | <ul style="list-style-type: none"> <li>(In recirculation mode): The flue vents / grilles are obstructed.</li> </ul>   | <ul style="list-style-type: none"> <li>Check that the flue vents / grilles are not obstructed.</li> </ul>  |
| Poor extraction.   | <ul style="list-style-type: none"> <li>The cooker hood cabinet does not have a hole for air to escape.</li> </ul>   | <ul style="list-style-type: none"> <li>For canopy cooker hoods, make sure there is a hole in the cabinet for the air to escape and that there is no shelf directly above the outlet.</li> </ul>  |
|  | <ul style="list-style-type: none"> <li>Installation is using the wrong sized ducting.</li> </ul>  | <ul style="list-style-type: none"> <li>Check that the cooker hood is using the correct size ducting.</li> </ul>  |
|  | <ul style="list-style-type: none"> <li>The ducting and / or outlet is restricted or obstructed.</li> </ul>  | <ul style="list-style-type: none"> <li>Check there are no restrictions within ducting or outlet.</li> </ul>  |
|  | <ul style="list-style-type: none"> <li>Minimum number of 90° ducting bends has been exceeded during installation.</li> </ul>  | <ul style="list-style-type: none"> <li>Check that the installation does not exceed the minimum recommended number of 90° bends.</li> </ul>   |
|  | <ul style="list-style-type: none"> <li>The installed ducting exceeds the recommended run length.</li> </ul>   | <ul style="list-style-type: none"> <li>Check that the installed ducting does not exceed the recommended run length for the model installed.</li> </ul>   |
| <ul style="list-style-type: none"> <li>The hood is not being switched on 10 minutes before and after cooking.</li> </ul> | <ul style="list-style-type: none"> <li>Ensure the cooker hood is switched on 10 minutes before and after cooking.</li> </ul>  |  |
| Condensation is collecting on the hood surfaces.   | <ul style="list-style-type: none"> <li>Cooking with pans using a large amount of water, can quickly create vapour and steam. This can collect onto the cold metallic surfaces of the appliance and possibly the splash back if tiled or glazed etc. <b>(This is not a fault with the hood or cooker if correctly installed).</b></li> </ul> | <ul style="list-style-type: none"> <li>Increase the ambient temperature of the kitchen.</li> <li>Check there is adequate ventilation.</li> <li>Reduce the duration of cooking if possible.</li> <li>Simmer once boil is achieved. Use lids on pans to reduce steam being released reducing subsequent condensation.</li> </ul> |

If you cannot eliminate the problem after following this checklist, consult your local Howdens dealer or an Authorised Service Agent. **Never try to repair a non functional product yourself.**

---

## Technical specification

**TECHNICAL INFORMATION:** The data plate on the side of the appliance states the total load when connected, the required voltage and frequency.

| General                   |                            |
|---------------------------|----------------------------|
| Total power consumption   | 252 W                      |
| Fuse                      | 3 Amp                      |
| Voltage / Frequency       | 220-240 V 50 Hz            |
| Cable type / section      | 3 core 0.75mm <sup>2</sup> |
| Cable length              | 1.5 Metres                 |
| Lamps                     | 2 x 1.5 W LED 6500 K       |
| Lighting efficiency class | A                          |
| Carbon filter             | LAM2004                    |

## Service and repairs

If you have a problem that you cannot resolve after reading this booklet, call the LAMONA Service Line. See page 14, "Guarantee".

- For service and repairs, call the LAMONA Service Line.
- Always use genuine spares, available direct from [www.lamonaspares.co.uk](http://www.lamonaspares.co.uk).
- To ensure the continued safe and efficient operation of the appliance we recommend that any servicing, repairs or interventions are only carried out by an authorised LAMONA service engineer.

**You may be charged for a service call if a problem with your machine is caused by incorrect installation.**

- The manufacturer declines all responsibility in the event of any printing mistakes in this booklet.
- The manufacturer also reserves the right to make appropriate modifications to its products without changing the essential characteristics.

### Declaration of conformity

We declare that our products meet the applicable European Directives, Decisions and Regulations and the requirements listed in the standards referenced.

**EC Regulation 1275/2008 for standby**

## Caring for the environment

### Disposal of the packing material



The environmentally friendly, recyclable packaging is designed to protect the appliance from damage during transportation. All packaging materials should be recycled. Recycling reduces the use of raw materials in the manufacturing process and also reduces the amount of waste in landfill sites.

#### Packaging may consists of:

Cardboard, paper, polythene foil (PE), CFC-free polystyrene (PS / foam) & polypropylene tape(PP).

### Disposing of your old appliance

- To ensure safe disposal, disconnect the mains plug from the socket. Cut the mains power cable and destroy.

Electrical and electronic appliances often contain valuable materials. They also contain specific materials, compounds and components, which were essential for their correct function and safety.

These could be hazardous to human health and to the environment if disposed of with your domestic waste or if handled incorrectly. **Please do not, therefore, dispose of your old appliance with your household waste.**



Disposing of the device incorrectly could cause fires or poisoning.



This appliance is marked according to the European directive 2004/108/EU on Waste Electrical and Electronic Equipment (WEEE).

- WEEE contains both polluting substances (which can cause negative consequences for the environment) and basic components (which can be reused).
- It is important to have WEEE subjected to specific treatments in order to remove and dispose properly all pollutants and recover and recycle all materials.

Please dispose of at your local community waste collection / recycling centre for electrical and electronic appliances, or contact your dealer for advice.



---

# Guarantee

## Product Guarantee Details (UK & Republic of Ireland only).

Your appliance has the benefit of a comprehensive manufacturer's guarantee which covers the cost of breakdown repairs. (Details of which are shown on your Proof of Purchase Document).

- Any claim during the period of the guarantee MUST BE ACCOMPANIED BY THE PROOF OF PURCHASE.
- The product must be correctly installed and operated in accordance with the manufacturer's instructions and used for normal domestic purposes.
- This guarantee does not cover accidental damage, misuse or alterations which are likely to affect the product.
- The guarantee is invalid if the product is tampered with, or repaired by any unauthorised person. (The guarantee in no way affects your statutory or legal right).

## What to do if you need to report a problem.

- Please ensure you have ready:
  - The product's model and serial numbers.
  - Howdens Proof of Purchase Document.
  - Your full contact details.

Call the Depot number on your Proof of Purchase Document supplied with the product/kitchen.

or

Call the LAMONA Service Line on:

Within UK 0344 460 0006

Within Republic of Ireland 01525 5703

\* Product installed within a domestic kitchen or a non-domestic kitchen where 8 or fewer people are using the appliance.

## Spare parts availability - 10 years

Only fit Genuine Spare Parts

[www.lamonaspares.co.uk](http://www.lamonaspares.co.uk) (UK only)

|   |                                     |
|---|-------------------------------------|
| Where to find the model and serial number on the cooker hood. | Inside the body of the cooker hood. |
|---|-------------------------------------|



---

## Notes



Product serial number  
(Place sticker here)

# LAMONA



Product information correct at the time of publication in April 2021.  
The company has a policy of continuous product development and reserves the right to change any products and specifications given in this manual. Subject to the Terms and Conditions of Trading, a copy of the Howdens Terms and Conditions is available upon request.  
Copyright © 2021 Howden Joinery Ltd. All rights reserved.

Howden Joinery Ltd.  
Thorpe Road, Howden, East Yorkshire. DN14 7PA England  
Howdens Cuisines SAS. Z.A. du Bois Rigault Nord,  
1 Rue Calmette, 62880 Vendin-le-Vieil, Cedex, France