

LAMONA

At the heart of the kitchen

Built-In Condenser Tumble Dryer

LAM8877 / 8 / 9



- Please read the Installation Manual to ensure safe fitting and use of the appliance.
- The appliance should be fitted by a suitably competent and qualified person.
- Please keep these instructions in a safe place for future reference.
- Danger of suffocation. Keep packaging material away from children.

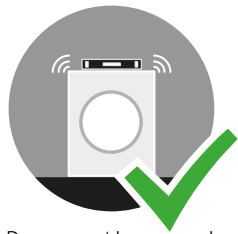
Installation Instructions

ISSUE v1.0 091122

Register 
my appliance

www.howdens.com/appliance-registration

Warning & Safety Information



Dryer must be securely located and be level



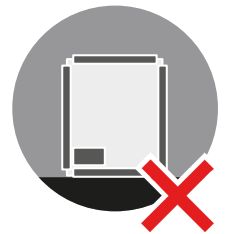
Be aware of the instability of the appliance prior to being fitted into position



Beware of sharp metal edges. Use gloves when handling



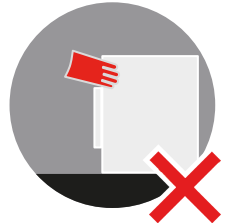
2 Person lift



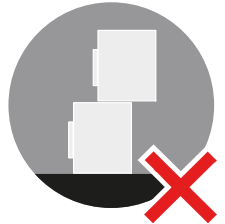
Ensure packaging & transit protectors have been removed before positioning.



If the electricity cable is damaged, it must be repaired by a competent person



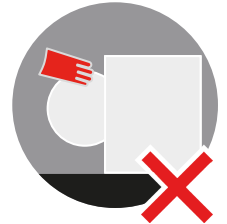
Do not push against the Dryer fascia panel or control dial



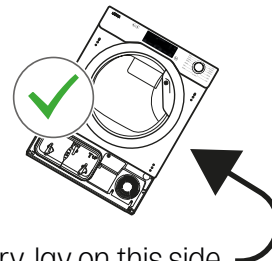
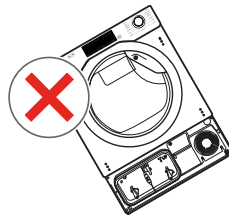
This appliance is not designed for stacking



Be aware of the instability of the appliance prior to being fitted into position



Do not lean on or use the door to position the appliance



In transit, stand the appliance in an upright position. If necessary, lay on this side.



Caution: You must wait at least 4 hours before switching the dryer on. This is to allow oil to flow back into the compressor. **Failure to do so could damage the compressor.**

Check for visual damage. If damaged, do not use. See guarantee: What to do if you need to report a problem.



The dryer contains R290, a flammable eco-sustainable refrigerating gas. **Keep open flames and sources of ignition away from the appliance.**

Throughout this manual the following warning symbols are used.



Warning for serious injury or death risk



Warning for risk of fire / flammable materials



Important / note for operating the system



Warning for electric shock



Warning for injury or property damage risk



Warning & Safety Information (continued)


 Please read these instructions carefully, observing the technical data and specifications. The manufacturer is not responsible if an incorrect installation and use causes injuries and/or damage. Please take appropriate care when installing. This appliance complies with all relevant E.U. Directives

Electrical Connection

For electrical data, refer to the rating label on the front of the dryer cabinet (with the door open).

Before connecting the tumble dryer, ensure that the connection data on the data plate (fuse rating, voltage and frequency) match the mains electricity supply. If in any doubt, consult a qualified electrician.

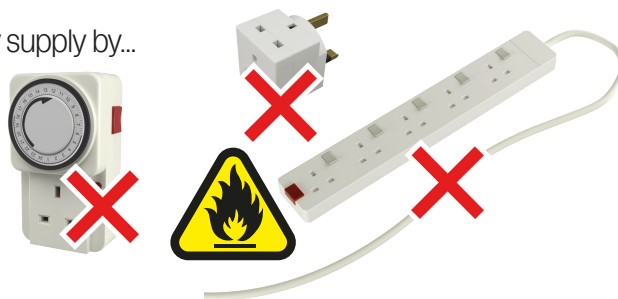
Reliable and safe operation of this appliance can only be assured if it has been connected to the mains electricity supply.


 **WARNING:** The electrical safety of this tumble dryer can only be guaranteed when correctly earthed. It is essential that this standard safety requirement is met. Socket outlet and plug must be of the same type.

If in any doubt, please have the wiring system of the building tested by a qualified electrician. **LAMONA cannot be held liable for the consequences of an inadequate earthing system (e.g. electric shock).**

 Do not connect the tumble dryer to the mains electricity supply by...

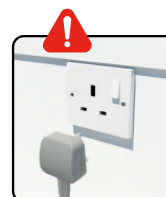
- a multi-socket adapter,
- multiple connectors
- an extension lead or similar
- an external switching device (such as a timer)
- Do not connect to a circuit that is regularly switched on and off by a utility
These do not guarantee the required safety of the machine (fire hazard due to the risk of overheating).



 The electrical socket must be easily accessible after installation so that the machine can be disconnected from the electricity supply if necessary.

In the event of a fault, the appliance must be isolated from the electrical supply.

 Do not touch the appliance when hands or feet are damp or wet.



 Avoid damaging the mains plug and cable. If a replacement be required, contact a **LAMONA** Authorised service agent, or a suitably qualified person.




| Do not power on until correctly installed |

Operating voltage: 220 - 240V, 50Hz Single Phase.

Supply circuit rating should be rated to at least 6A.

Caring for the environment

Disposal of the packing material

 The environmentally friendly, recyclable packaging is designed to protect the appliance from damage during transportation. All packaging materials should be recycled. Recycling reduces the use of raw materials in the manufacturing process and also reduces the amount of waste in landfill sites.

Installation overview guide

Installation considerationsp.6

Safe operating temperatures..... p.6

Ventilation and access.....p.6

Dimensions and minimum clearancesp.7

Installationp.7

Mounting the door furniture..... p.8

Fix the decor door to the dryer..... p.9

Anti-tilt block p.9

Profile kitchen p.10

Plinth preparation. p.10

Ventilation grille - Easy Removable Plinth Kit p.11

Final alignments..... p.11

Installation Considerations

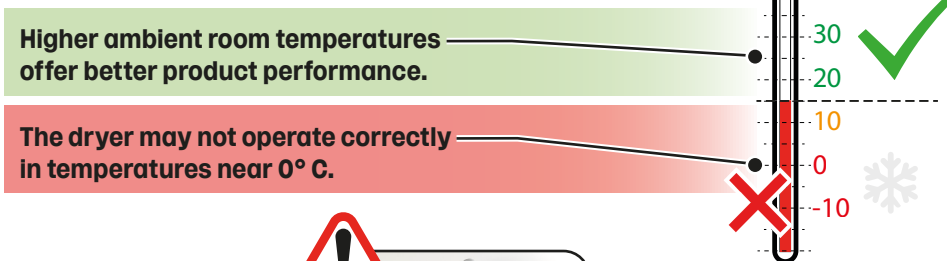
! Safe operating temperatures

This appliance is designed to work at temperatures between 15 - 35°C.

DO NOT install in rooms with low temperatures or risk of frost occurring.

A minimum ambient temperature of **15°C** is recommended to avoid external condensation.

Reliability of the electronic control unit may be impaired at temperatures below freezing point.



There is risk of damage to valves, pumps and hoses if water is allowed to freeze in the hydraulic circuit.



Frozen hoses may burst or split.

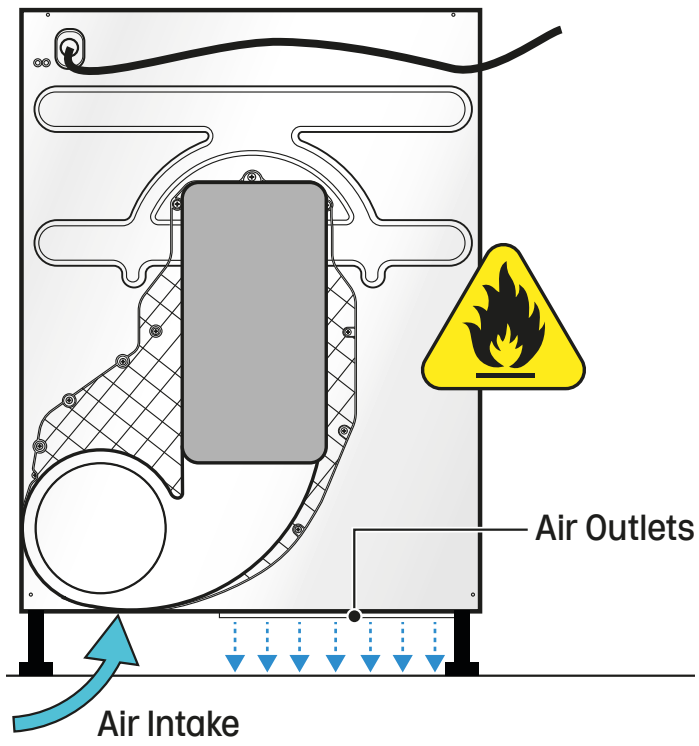
! Ventilation and access

There must be adequate ventilation in the room where the dryer is located to prevent gases from appliances burning other fuels (including open fires), being drawn into the room during use.

! Do not install behind a lockable door, sliding door, or a door with a hinge on the opposite side to that of the dryer in such a way that a full opening of the dryer door is restricted.

! A plinth vent must be fitted

! The space between the bottom of the dryer and the floor must not be obstructed.




Note: This tumble dryer **MUST NOT** be used in a non-stationary location (e.g. on a ship).

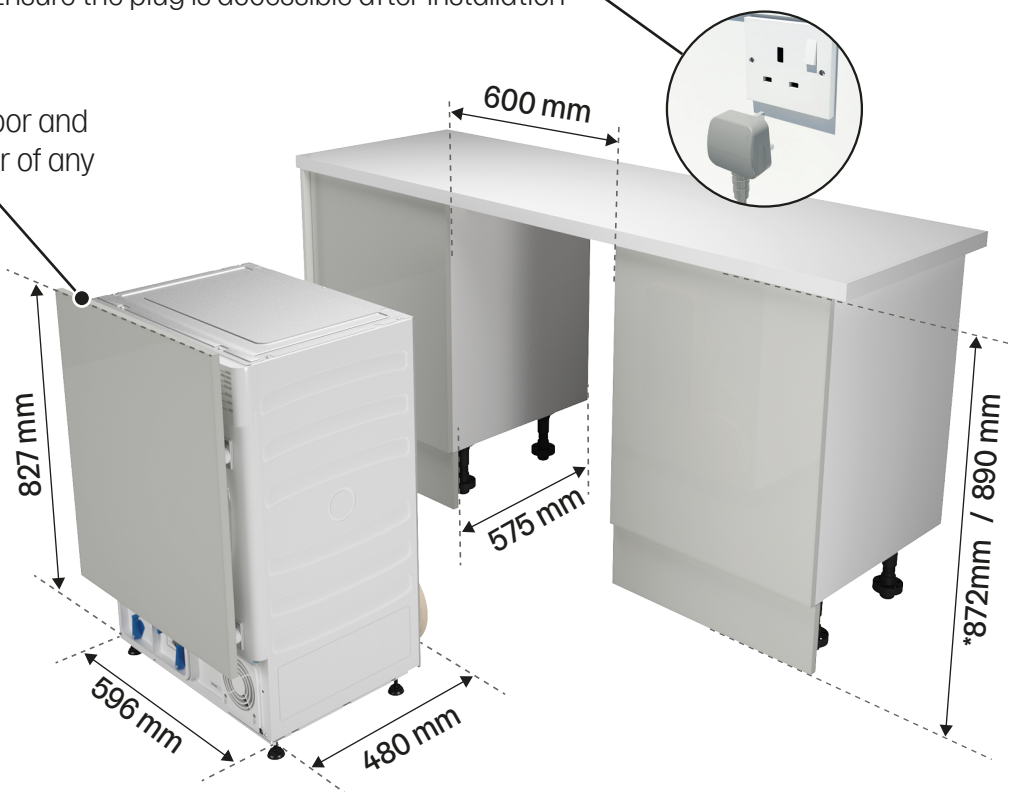
Dimensions and minimum clearances

Ensure the plug is accessible after installation

Check that the appliance door and fixed door furniture are clear of any obstructions

 It is recommended not to install the appliance between decor end panels unless it is placed at the end of a run, where the niche size can be increased due to clearances.

 Adjust feet. See below.

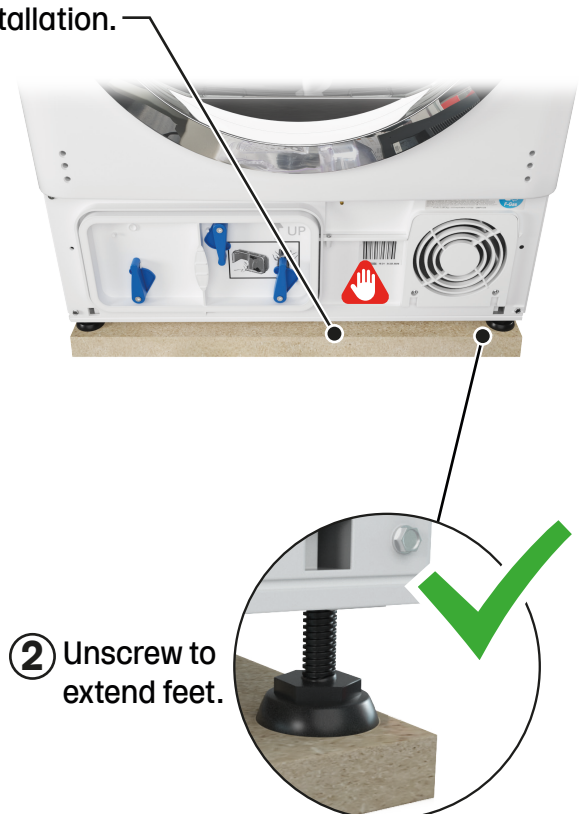
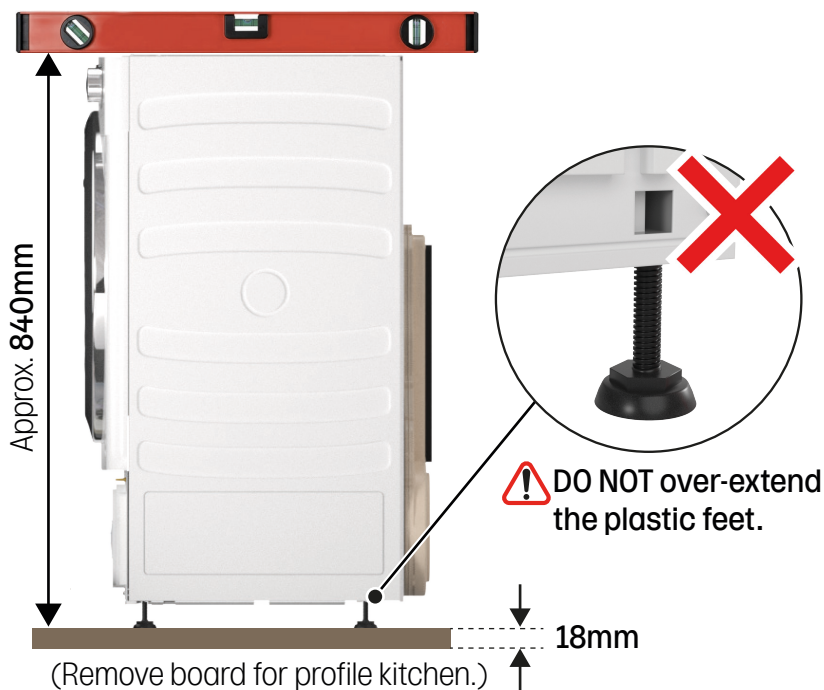


*Howdens Profile & Standard

Installation

- 1 We recommend standing the dryer on a board securely fastened to the floor, this reduces the risk of breaking the plastic feet during installation.

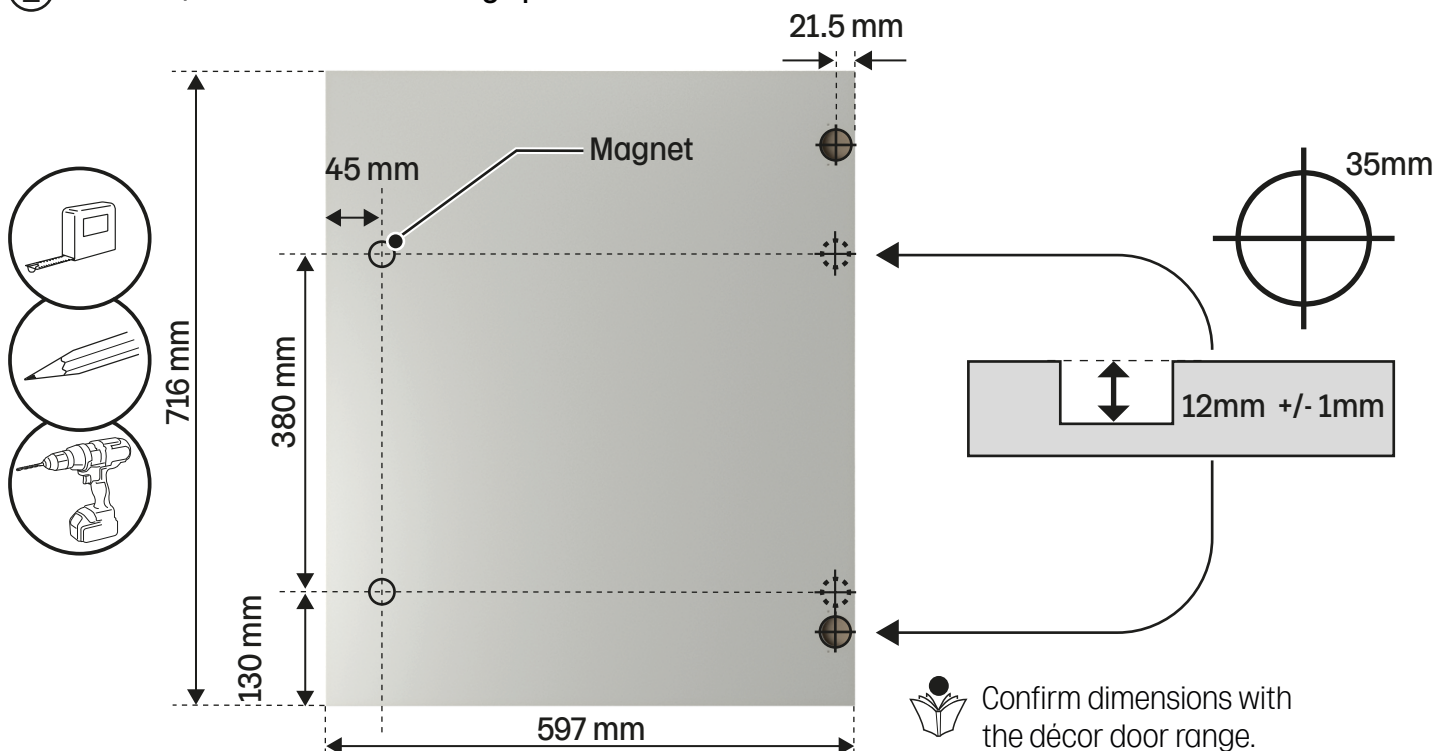
Measure from underside of level.



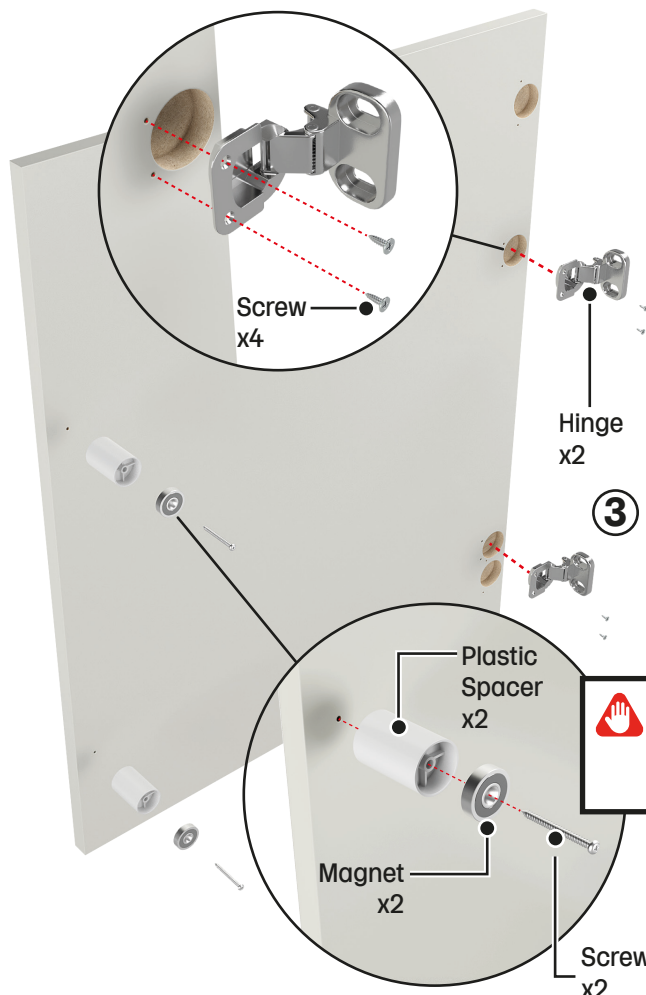
 Please see the Howdens default Kitchen Installation Manual set-up for more details.

Mounting the door furniture

① Measure, mark and drill the hinge positions.



② Screw fix the hinges, to the décor door.



③ Measure & fix the spacers and magnets.

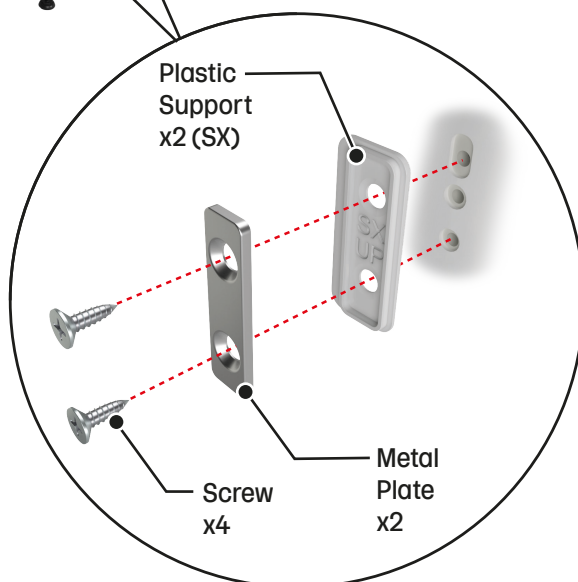
Use one or two magnets to suit the frontal used

④ Attach the plastic support and metal plates.

⚠ Use the correct supports.
SX = Left. DX = Right.

⚠ Do not use power tools or overtighten.

Note: Screwheads are Phillips type.

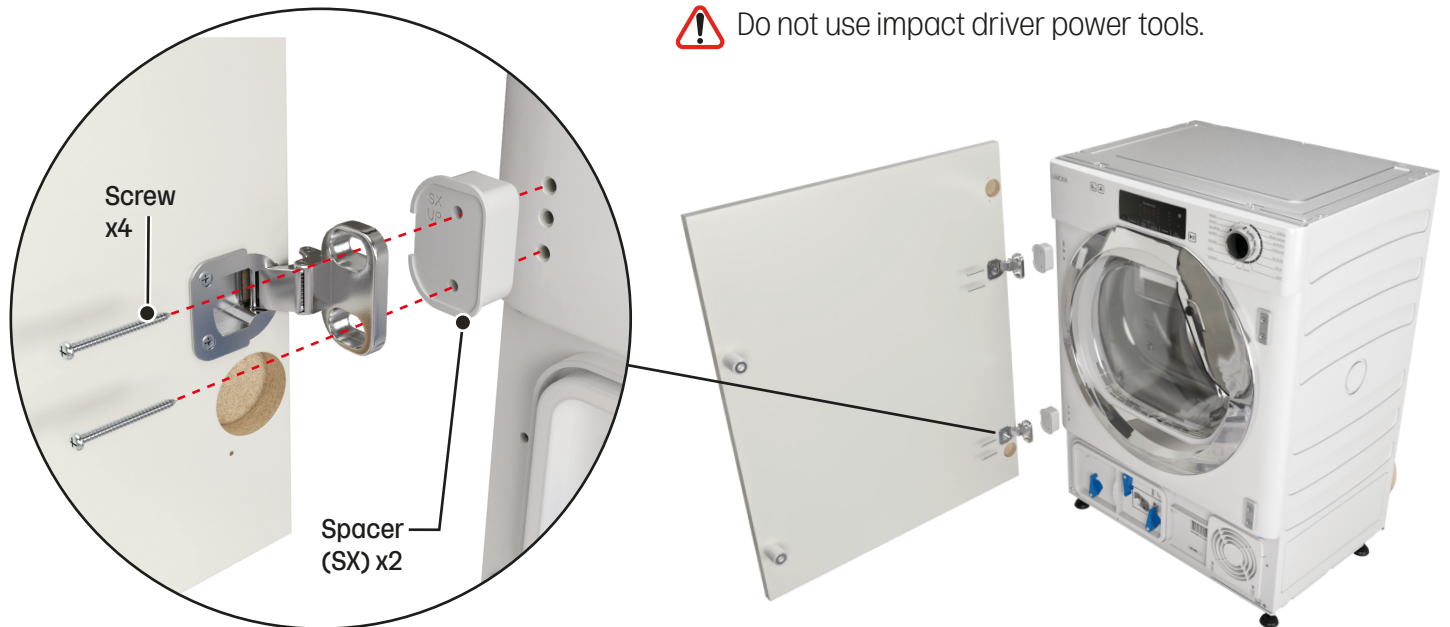



Fix the décor door to the dryer.

② Fix the décor door to the dryer.

 Use the correct spacers, SX = Left. DX = Right.

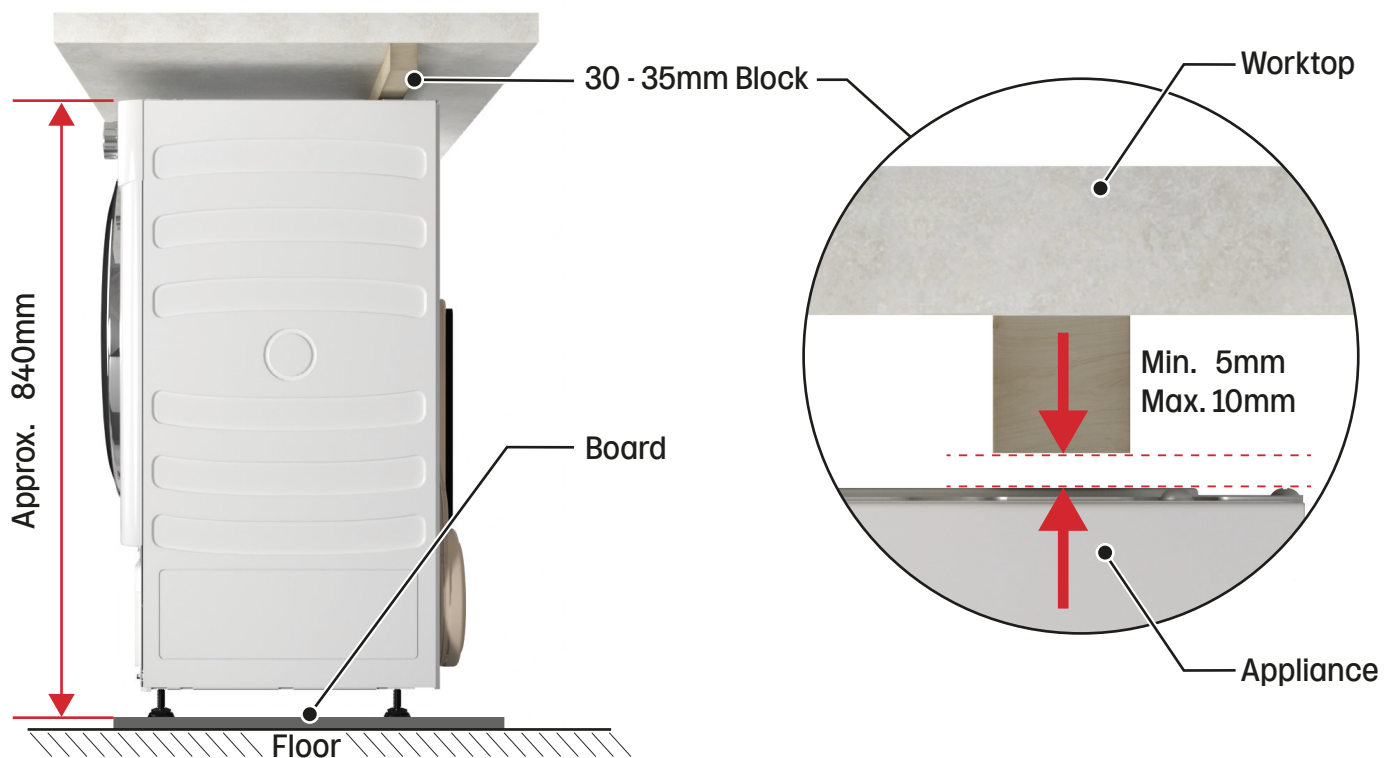
 Do not use impact driver power tools.



 Phillips screws are hard to drive, we recommended using a hex headed bit to avoid screwhead damage.

Anti-tilt block

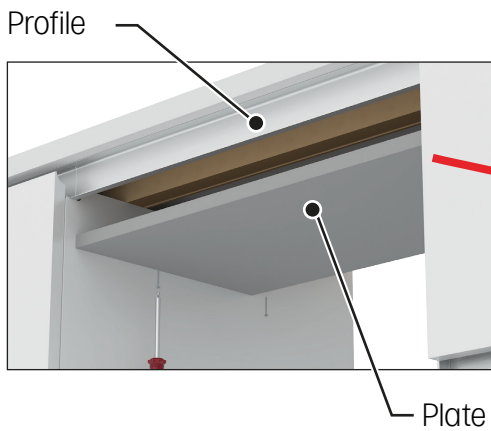
- For added safety, an anti-tilt block should be fixed beneath the worktop.
- There should be no opening in the worktop above the tumble dryer.




Profile Kitchen

Fix 18mm plate below worktop which finishes flush with the bottom edge of the profile.

- A** Fix 18mm plate below the worktop.
Fit flush with the bottom edge of the profile.



 We recommend sealing all cut surfaces and ends.

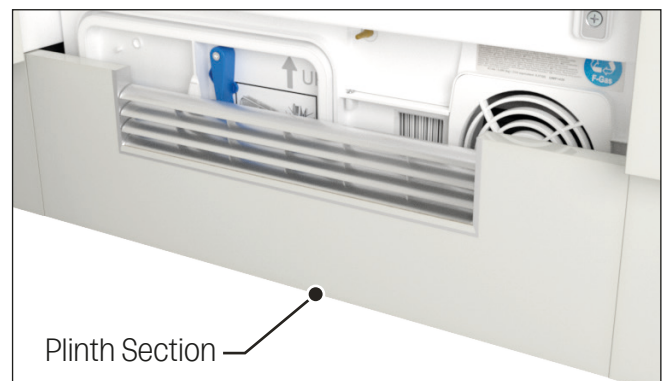
Plinth Preparation



WARNING: A ventilation grille is required for the correct operation of the appliance.
It MUST be fitted.

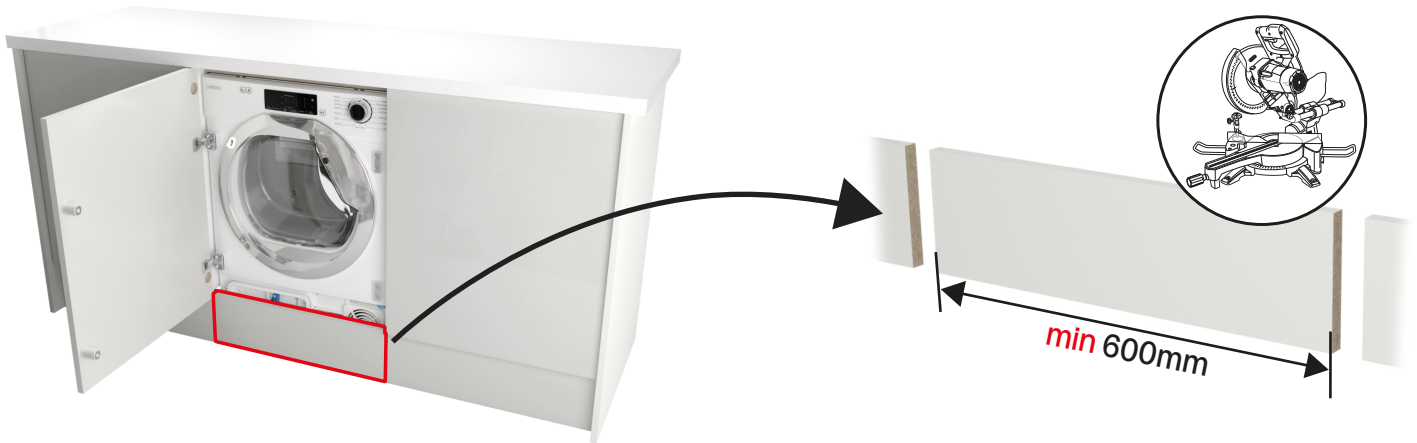


The Easy Removable Plinth section provides quick and easy access to clean the condenser filter.



Ventilation grille - Easy Removable Plinth Kit

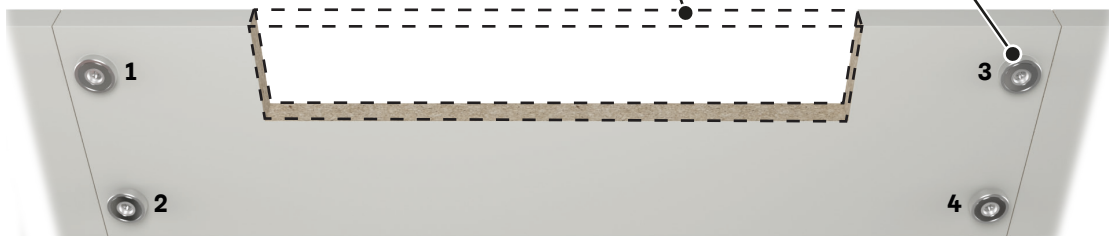
- ① Cut out and edge a section of plinth at the front of the appliance.



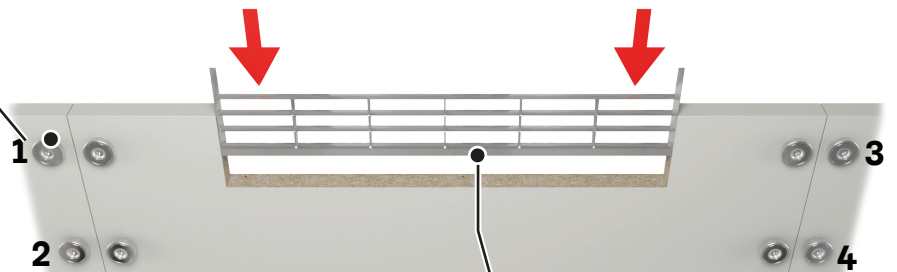
- ② Cut out a section to suit the vent grille being used.

(Ensure there is enough space left for positioning magnets at each end).

- ③ Screw fix 4 magnets to the back of the plinth.



- ④ Screw fix 4 magnets to the back of each end of the main plinth sections.



- ⑤ Fit the vent / grille section to the cut plinth section.



- ⑥ Fit the plinth vent / grille section to the main plinth, aligning the magnets with the metal plates.

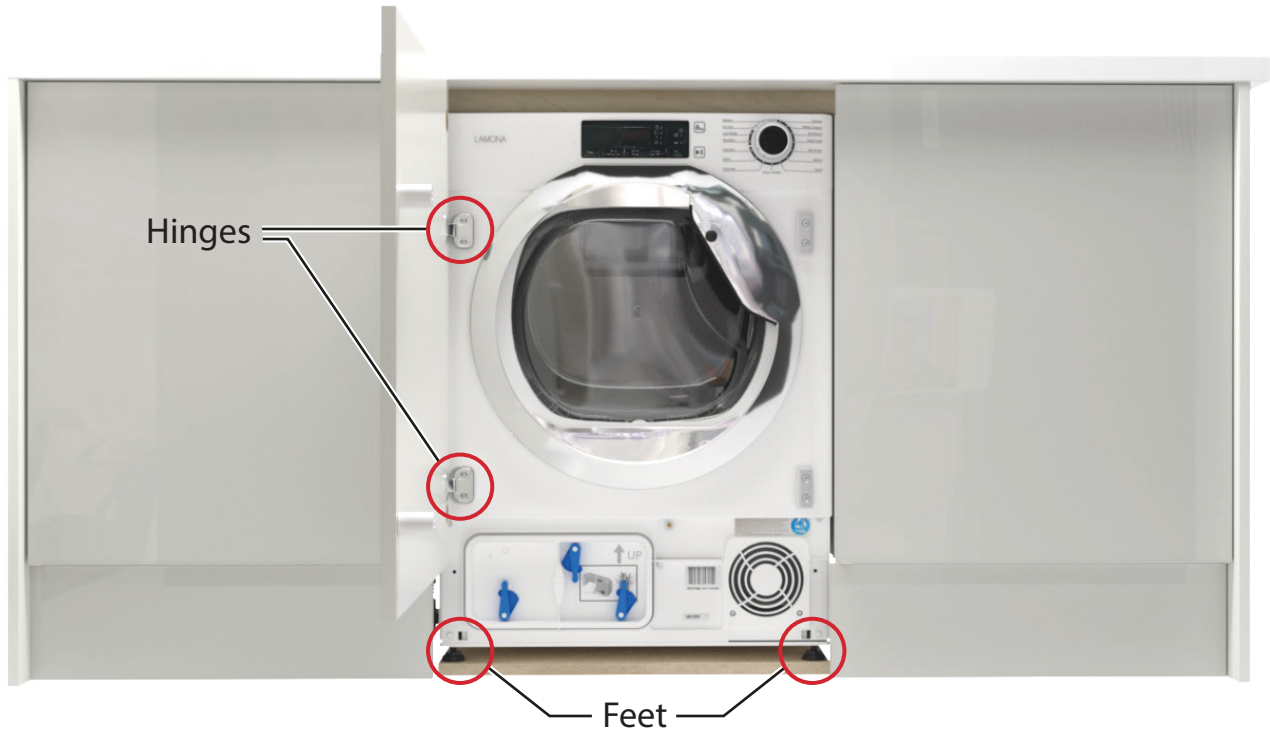
Metal plate



Note: Metal plates not supplied.

Final alignments

Adjust the following for final alignment if necessary.



Notes

Notes

Notes



Product serial number
(Place sticker here)

LAMONA



Product information correct at the time of publication in April 2021.
The company has a policy of continuous product development and reserves the right to change any products and specifications given in this manual. Subject to the Terms and Conditions of Trading, a copy of the Howdens Terms and Conditions is available upon request.
Copyright © 2021 Howden Joinery Ltd. All rights reserved.

Howden Joinery Ltd.
Thorpe Road, Howden, East Yorkshire. DN14 7PA England
Howdens Cuisines SAS. Z.A. du Bois Rigault Nord,
1 Rue Calmette, 62880 Vendin-le-Vieil, Cedex, France