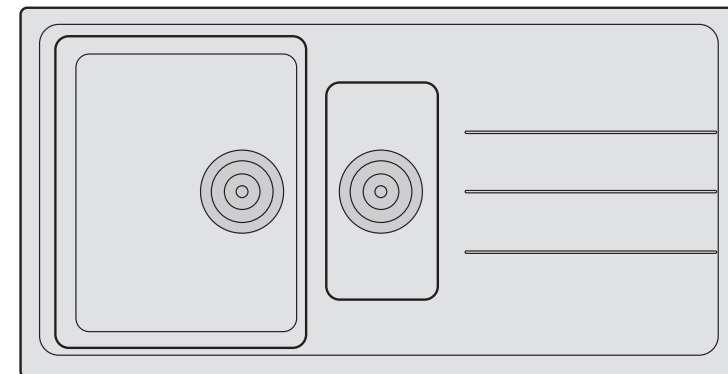
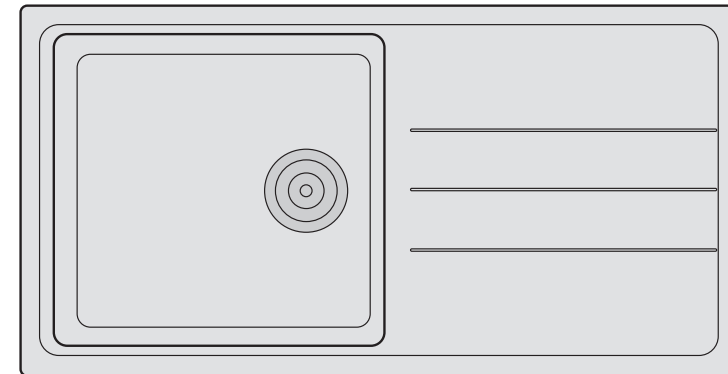
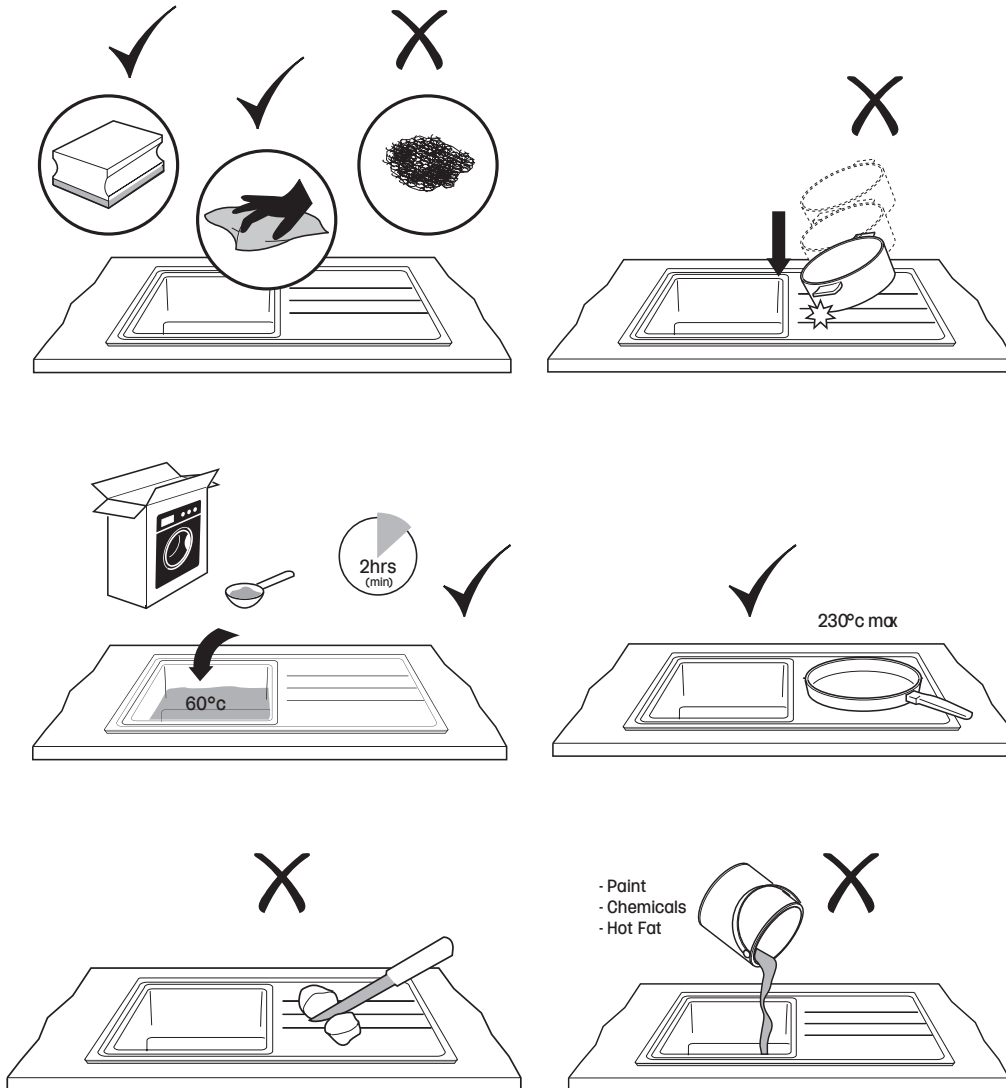


Care and Maintenance

Composite 1.0 & 1.5
Bowl Sinks

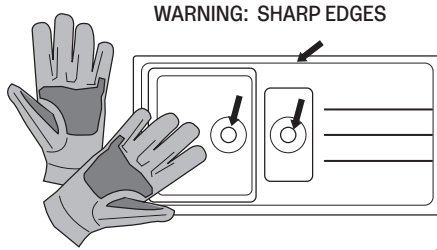
SNK2200/02/04
SNK2201/03/05



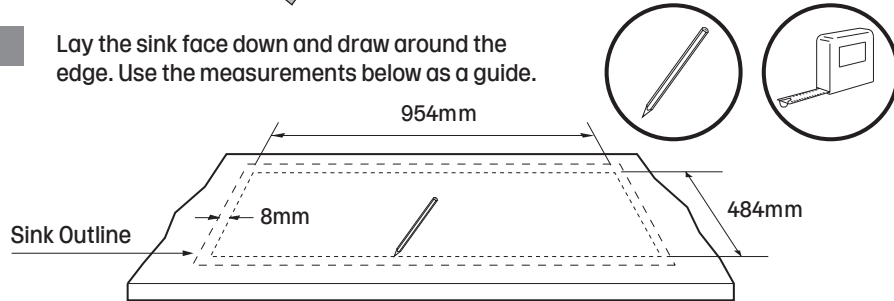

HOWDENS

Installation

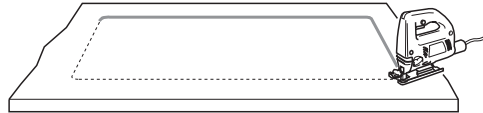
Measure and Cut



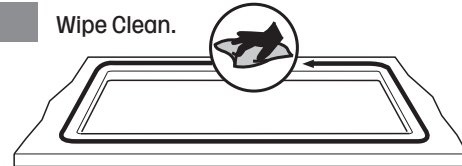
- 1** Lay the sink face down and draw around the edge. Use the measurements below as a guide.



- 2** Cut around the inner line.



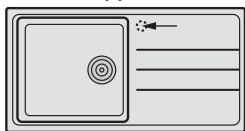
- 3** Wipe Clean.



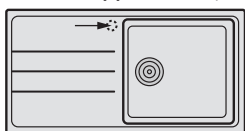
Sink Preparation

- 4** Drill the sink for the tap hole.
Note: Make sure you drill the correct hole, depending on the LH or RH application.

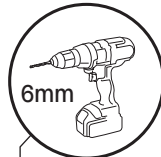
LH Bowl application



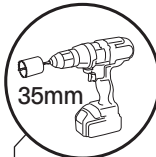
RH Bowl application (shown)



Drill through the underside of the sink using the indentation as a guide.



Turn the sink over and drill the tap hole.

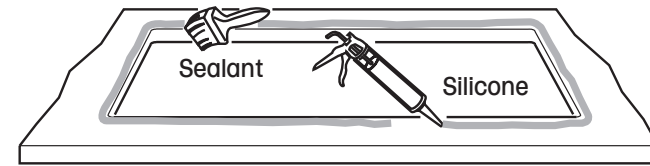


Underside

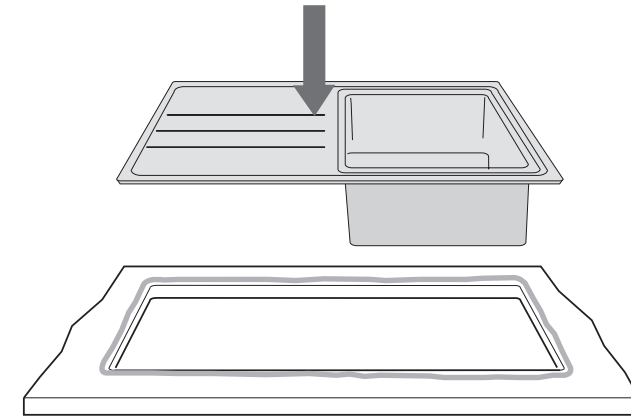
Top

Sink Fitting

5



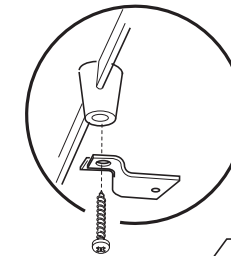
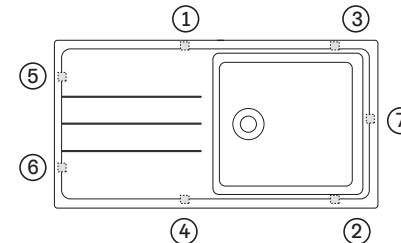
6



7

Fit brackets to the sink using the screws provided.

Clip locations and order of tightening with sink in position.



Wipe away excess silicone.



Note: Once tightened, brackets can be secured up into the underside of the worktop. Screws are not supplied.