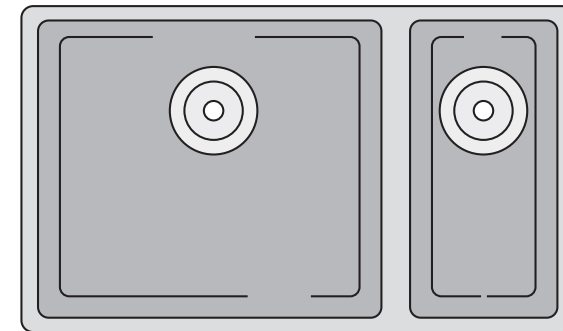
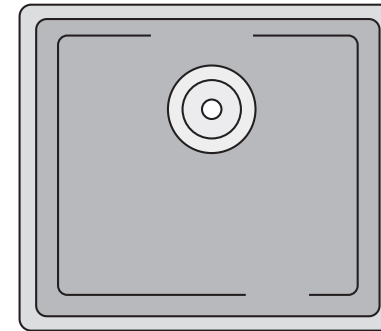
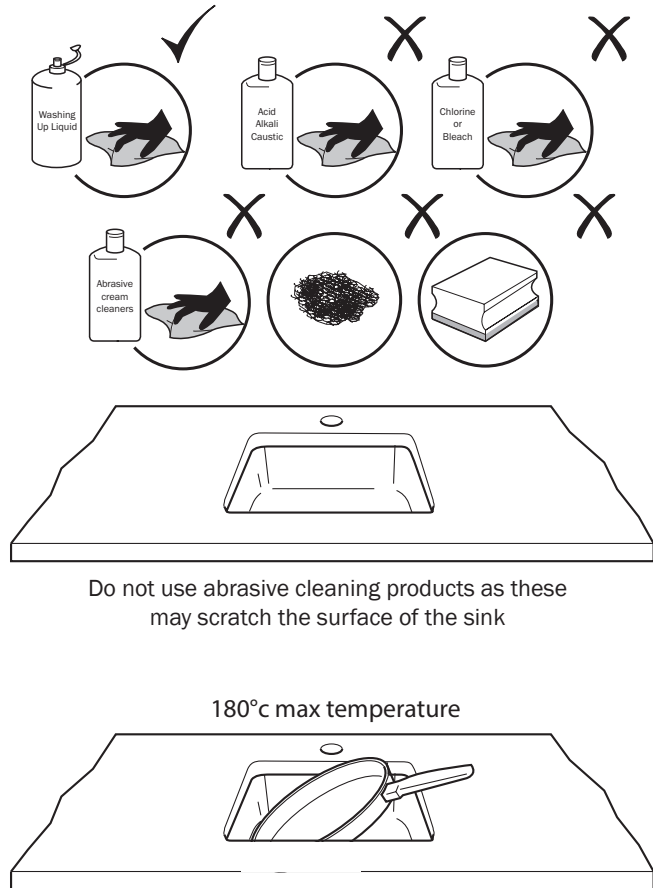


Care and Maintenance

Single Bowl Black Granite Inset/Undermount Sink **SNK2120**
1.5 Bowl Black Granite Inset/Undermount Sink **SNK2122**



LAMONA
Exclusive to Howdens Joinery Co.

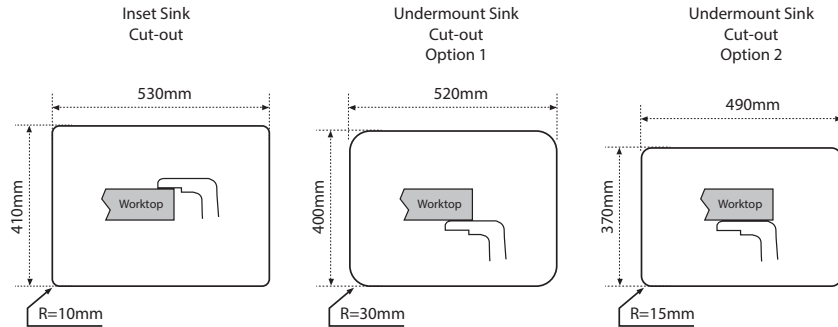
Installation

Measure and Cut

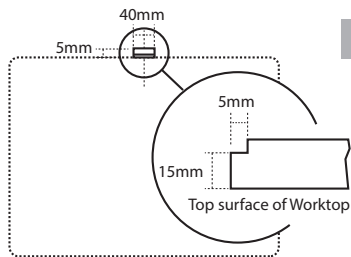
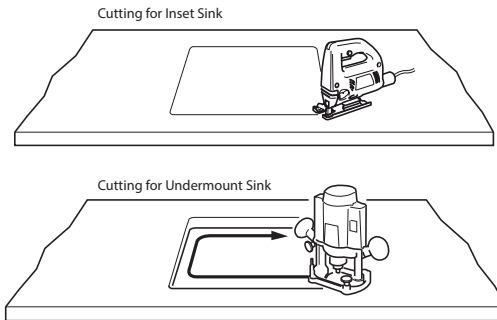
IMPORTANT

When measuring and positioning the sink to the top, ensure enough gap is left for the tap hole position behind the bowl. This should be cut at the same time as the sink cut-out

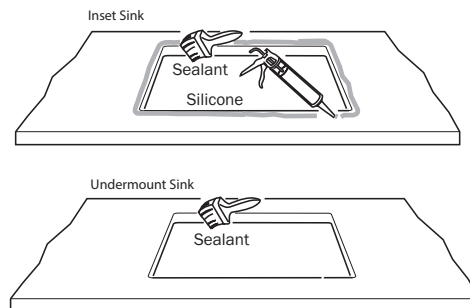
- 1 Follow the dimensions shown for the cutout size of your sink bowl depending on an inset or undermount installation.



- 2 Drill four holes, one in each corner of the inner line. Use a jigsaw to cut-out. **Note:** When fitting an undermount sink, a smoother finish is required to the worktop cut-out. Use a router to achieve this finish. Sand to a final finish. The worktop will require notching on the underside for the overflow in an inset sink application (see image below).



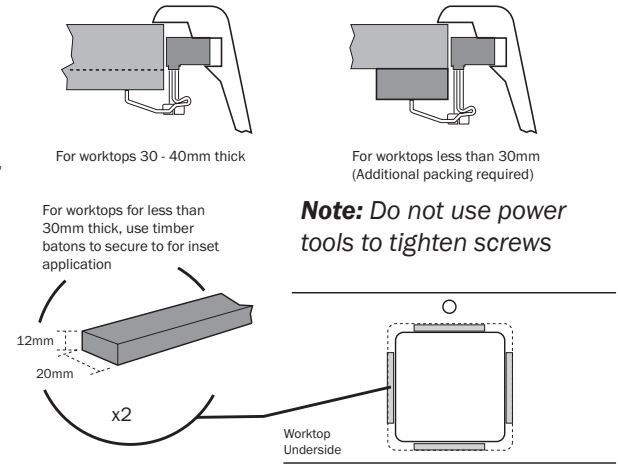
- 3 Clean around the cut-out removing any dust then seal around the cut-out using a waterproof sealant. For inset sinks use silicone around the rim to secure the bowl in position.



4

Inset Sink

Fit the 4 sink clips to the side of the sink. Separate the front two mounted clips, then fit the sink into the cut-out. Centre the sink and tighten the screws from the underside to clamp sink in position.

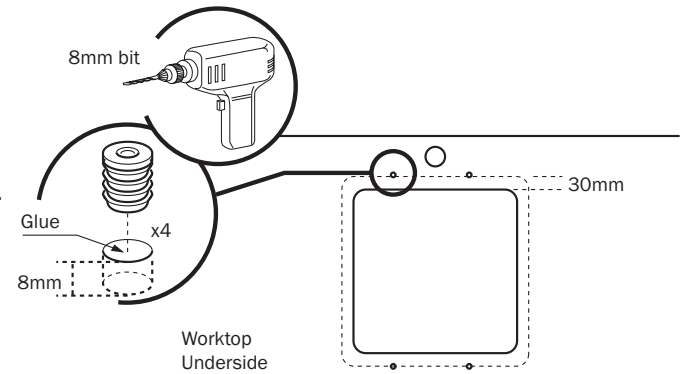


Note: Use strips of timber to pack the underside of the sink if your worktop is less than 30mm thick.

5

Undermount Sink

Drill four 8mm holes in the locations shown and tap the metal inserts into place.



6

Fit the sink to the underside of the worktop, making sure the bowl is concentric to the cut-out. Push down firmly to adhere silicone seal. Fit the brackets to the worktop inserts so they clamp onto the rim of the sink.

Note: Silicone the thread of the screws for extra strength. Wipe away any excess silicone

