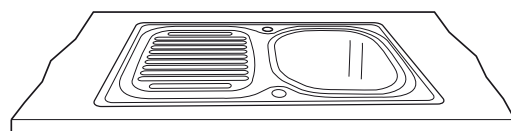
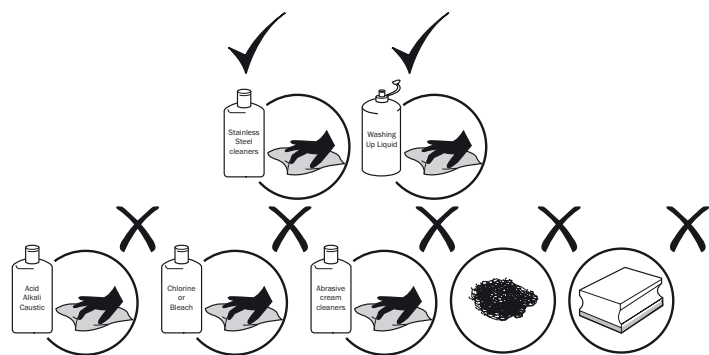


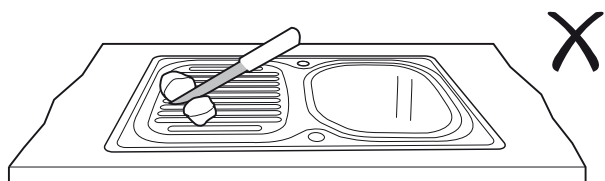
Care and Maintenance

Inset Stainless Steel Sink

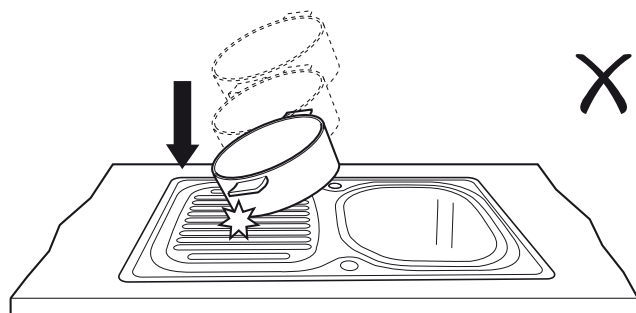
SNK0048
SNK5140/50/60/71



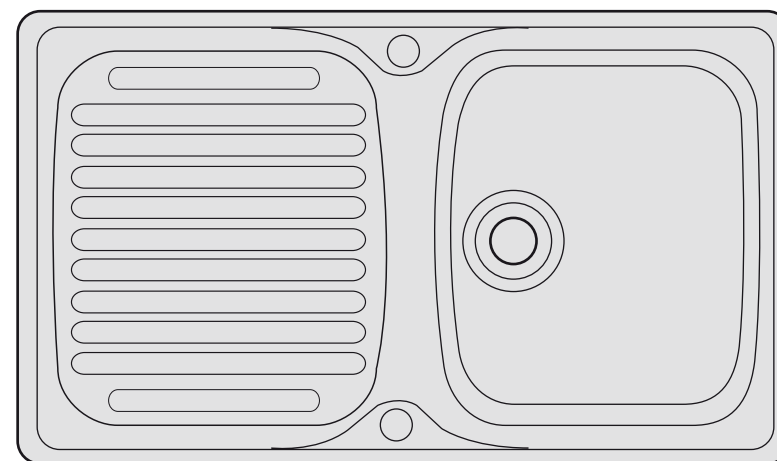
Do not use abrasive cleaning products as these may scratch the surface of the sink



Do not cut on or drag objects across the sink



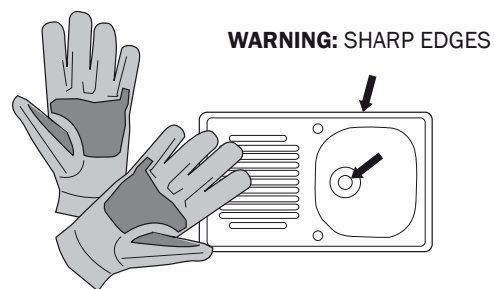
Do not drop heavy objects onto the sink



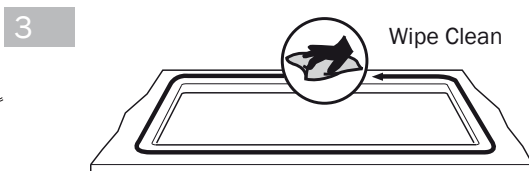
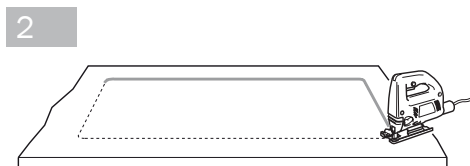
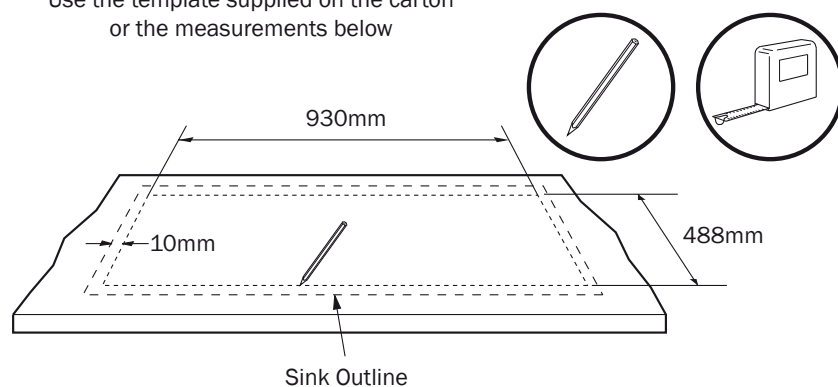
LAMONA
Exclusive to Howdens Joinery Co.

Installation

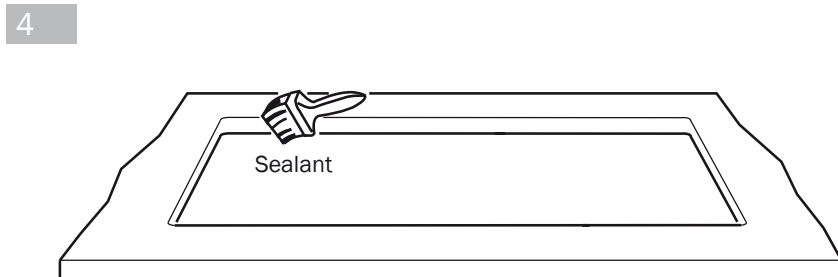
Measure and Cut



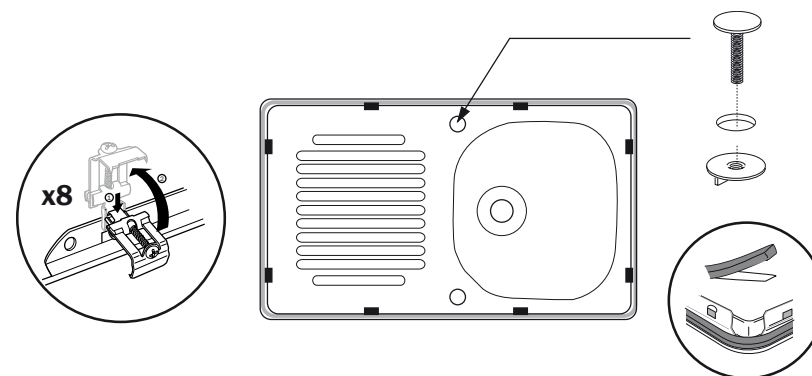
- 1 Use the template supplied on the carton or the measurements below



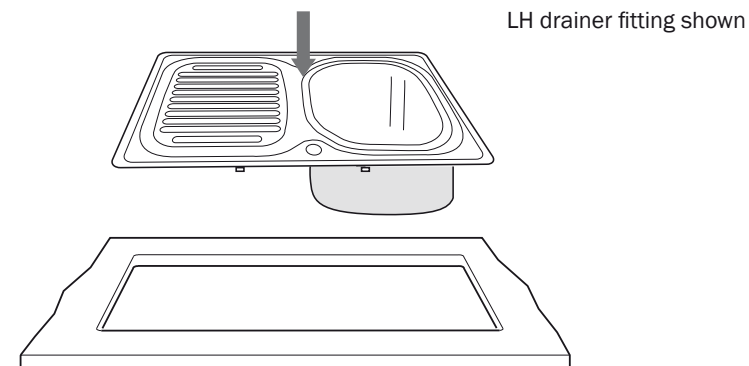
Fitting



5

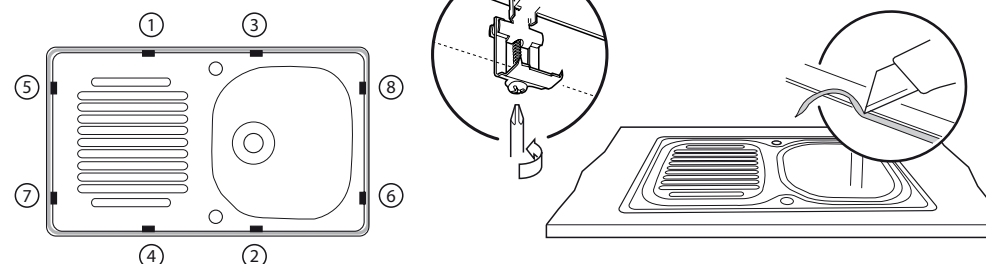


6



7

Clip locations and order of tightening with sink in position



Note: Remove excess foam strip, taking care not to damage the worktop