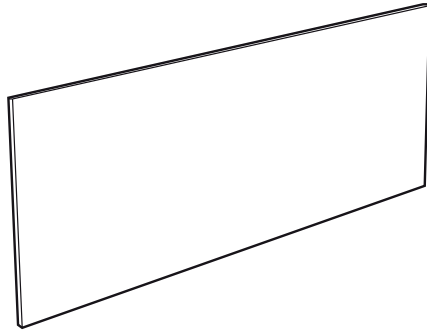


Acrylic Backboards

Installation

WOKLE8



Important Notes:

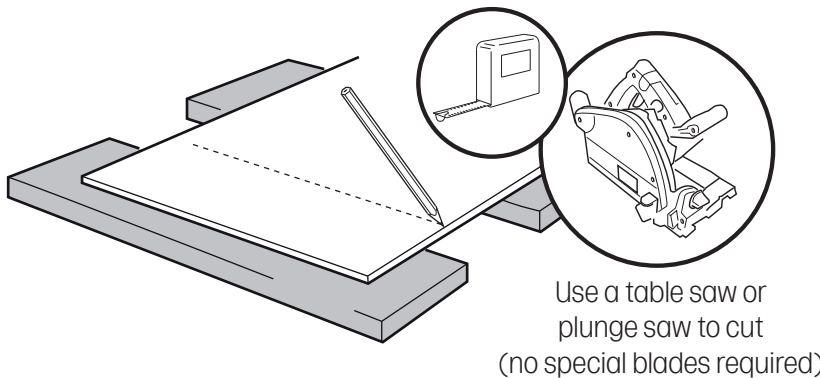
Ensure packaging is disposed of in a safe environmentally friendly way

No specialist tools are required for cutting and installing acrylic backboards
No sealer strips are required due to the design of the product and edges are not susceptible to moisture if exposed



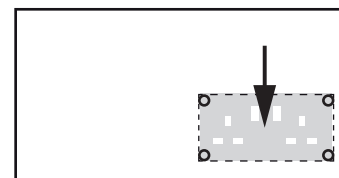
Cutting

Always support the backboard when cutting.

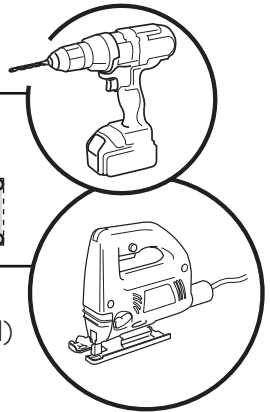


Use a table saw or plunge saw to cut (no special blades required)

Drill a hole in each corner of the socket location to help prevent cracking when cutting



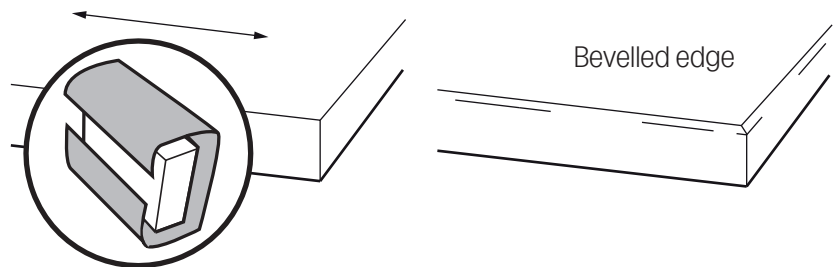
Use a jigsaw to cut-out for plug sockets (where required)



Finishing Edging

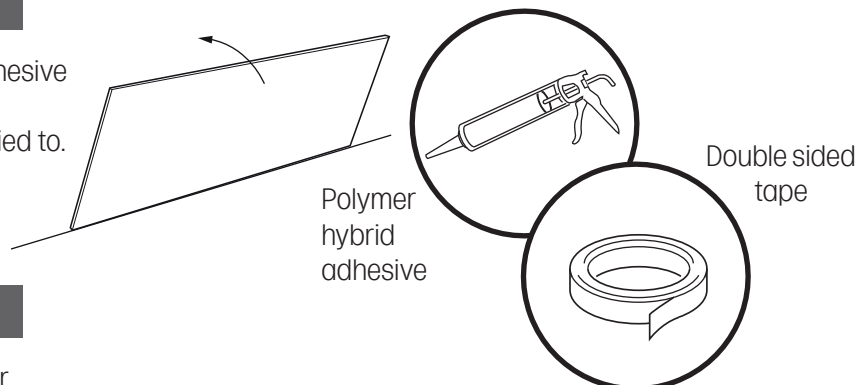
Lightly sand the cut edge, using a light grit paper.

Note: For a more decorative finish, a bevel can be applied using sanding paper.



Wall Fixing

Double sided tape or polymer hybrid adhesive can be used to secure the backboard, depending on the surface its being applied to.



Joining

Butt joints can be used 'end to end' or for internal/external corners.

Mitered joints can also be used.



Note: Edges can be very sharp, so care should be taken when handling.

