

Dekton Worktops

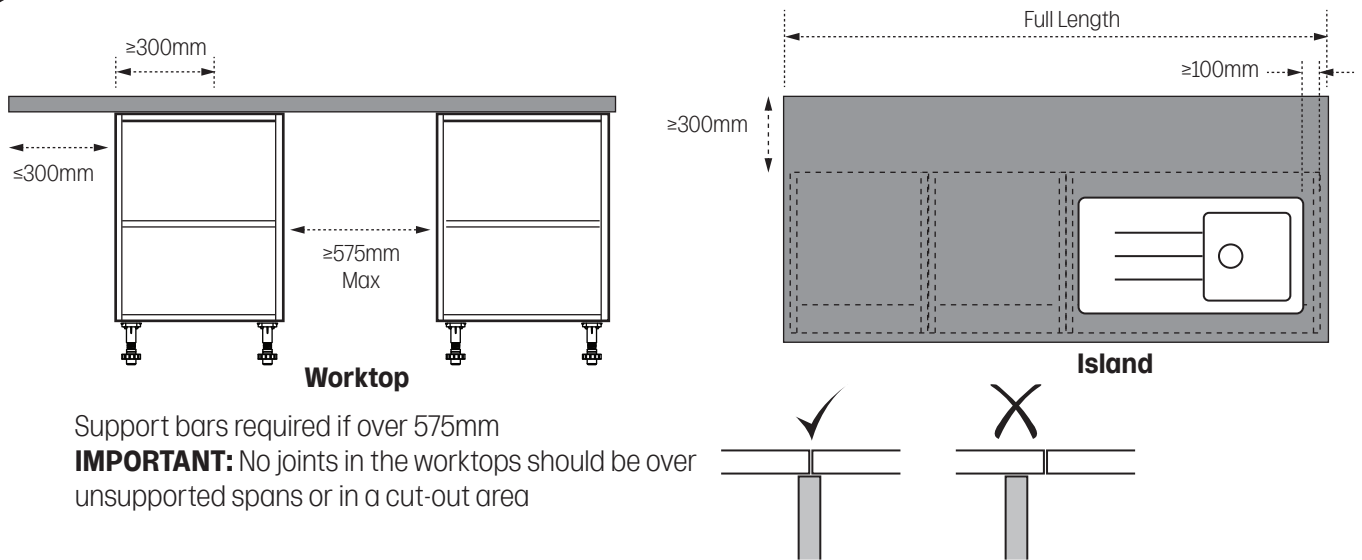
Reference Guide

DWRG01

This reference guide is designed to give key information on planning & installation for Dekton worktops.

Note: Do not drag ceramics and glassware across the surface of the worktop in order to avoid marking.

1 Unsupported spans



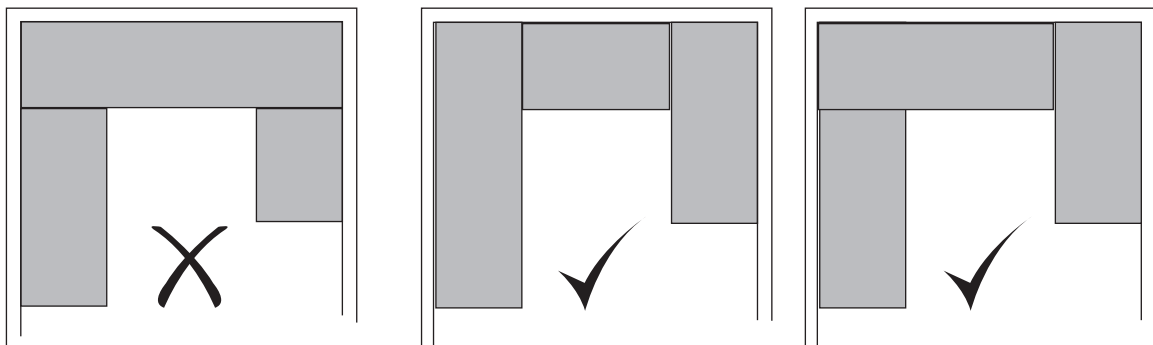
Support bars required if over 575mm

IMPORTANT: No joints in the worktops should be over unsupported spans or in a cut-out area

2 Positioning

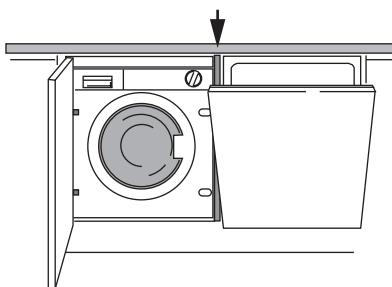
As best practice, never fit a worktop between two wall sections.

Note: Plan where joints will sit in relation to decor patterns.



3 Support

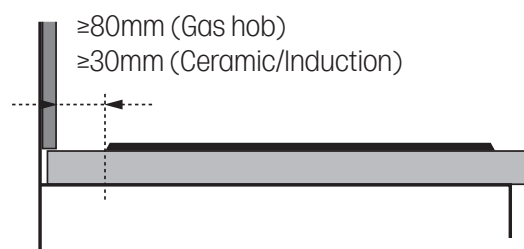
Where unsupported spans exceed the maximum span of a support bar, a decor end can be used to bridge the gap. e.g. where appliances are fitted. support bars are still required over spans of 575mm.



4 Hob positioning

Note: Always refer to the appliances guidelines for confirmation on minimum spacing requirements.

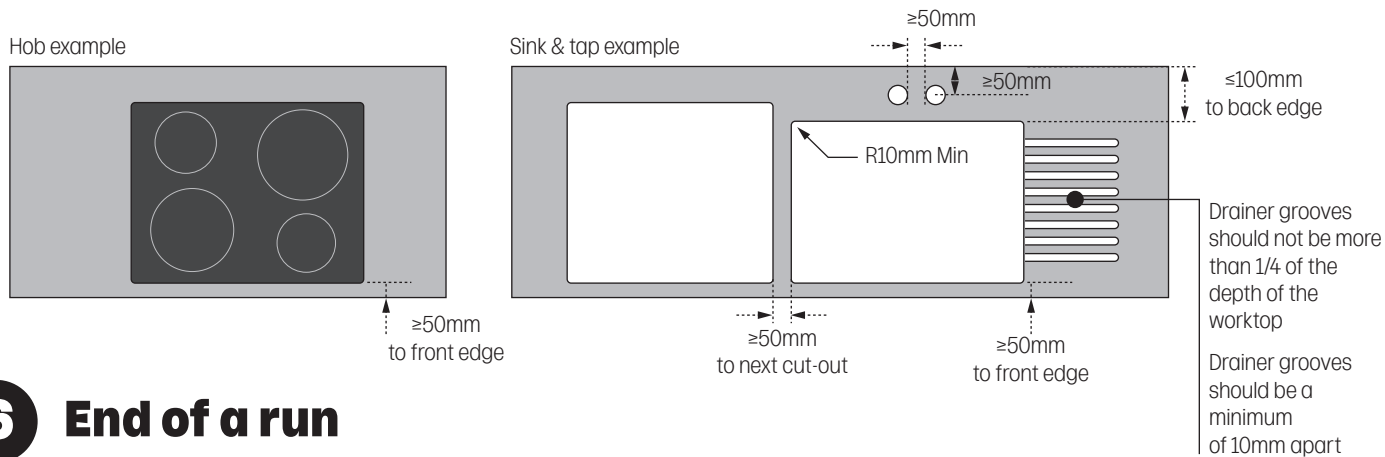
The distance between the back of the hob to the next hard surface (if material is Dekton) must be 80mm min (Gas hob) & 30mm min (Ceramic/Induction hob).



5 Cut-outs

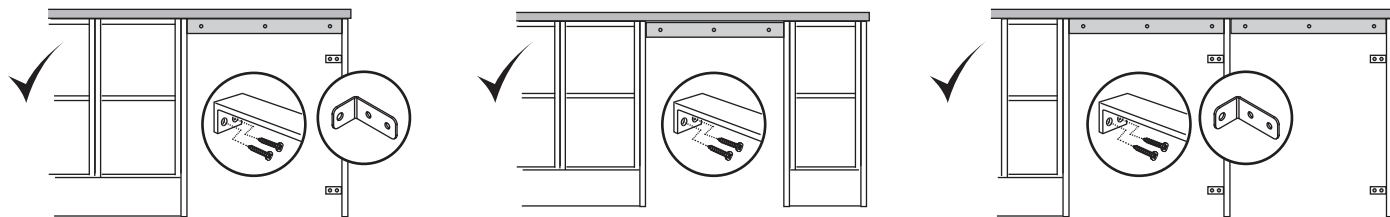
Dekton worktops require specific minimum measurement for cut-outs. See illustrations below for guidance. We recommend that cut-outs or tap holes are slightly chamfered.

Note: In all applications, always follow the appliance/sink cut out guide for other key dimensions specific for that product.



6 End of a run

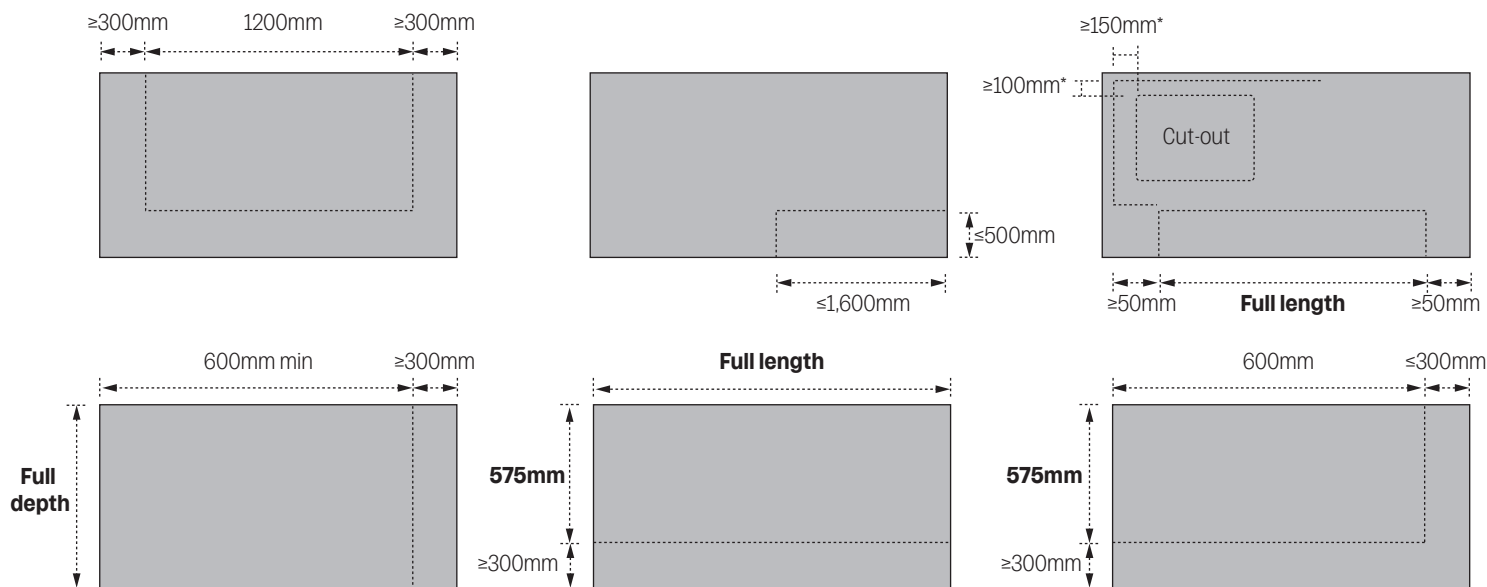
Always try to finish a run with a cabinet. Where a single panel is being used, additional support with a wooden batten is required along with a metal support bar.



7 Product overhangs

Island overhang information - \leq Max/ \geq min

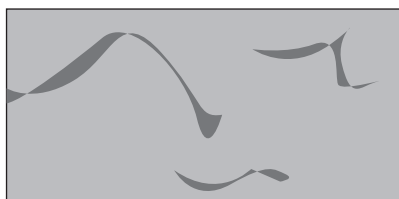
*Minimum general cut-out principles for cut-outs in all island applications - dimensions to the edge of cabinet



8 Visual

Dekton is a product made using natural materials. Consider how patterns might run through joints when planning sections/where joints are required.

Note: Dry fit tops first.



9 LED lighting

LED lighting should not be recessed into the underside of the Dekton worktop on an overhang, as this can weaken the worktop.

