



HOWDENS

JOINERY CO.

HOWDENS PROFESSIONAL FAST FIT V GROOVE LAMINATE FLOORING

Simple and quick installation with no tapping or glue required*



*See point 10 & 24 on the reverse of this sheet

Features and benefits



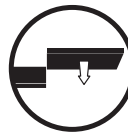
Compression proof
& impact resistant



Suitable for hot water &
electrical underfloor heating



Flooring can be
taken up again



Planks can be
independently fitted



Audible 'clicking' sound when
Plank side locks into place

Important information



Sealed packs must be stored for at least 48 hours where they are to be laid.



Packs are to be laid flat on the floor with at least 50cm between packs and walls.



Packs should be stored in a room with a minimum temperature of 18°C.



Do not open packs until you are ready to install the flooring.



The fitting method for this flooring is unique and laying instructions must be followed on the reverse of this sheet

AC 4

1285mm x 192mm x 8mm
9 Panels Per Pack
Coverage 2.22m²
Pack Weight: 15kgs



CE

Howden Joinery Group Plc
40 Portman Square, London W1H 6LT
13
HJ-001-JC
EN 14041:2004
Laminate flooring for internal non structural use

Reaction to fire: E₁
Content of Pentachlorophenol: NPD
Emission of Formaldehyde: Class E1
Slipperiness: NPD
Electrical Behaviour: NPD
Thermal Conductivity: NPD



AQUA
BLOCK

20

Years
Domestic
Warranty

5

Years
Medium
Commercial
Warranty

Before Laying

Please read through the laying instructions before fitting the flooring, as failing to do so may invalidate any warranty and guarantee claims.

Please check the planks in good lighting conditions for any defects, as once the planks are laid you can no longer make any claims due to defects (1). Excess water and spills should be immediately wiped clean to protect the flooring surface (2). Flooring should not be used in areas with high humidity & moisture content such as saunas.

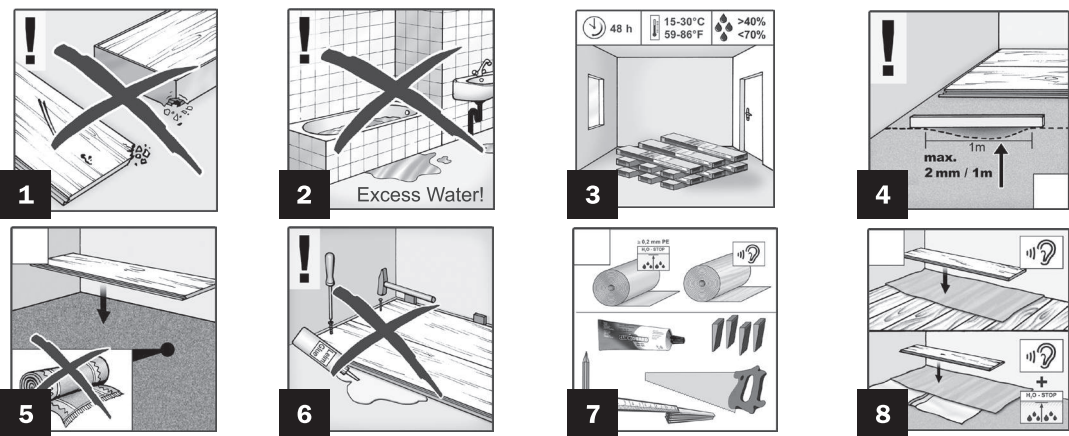
Preparation:

- Sealed packs must be stored for at least 48 hours where they are to be laid (3).
- An important prerequisite for the installation and long preservation of the laminate, is a relative air humidity of between 40%-70%.
- The sub-floor must be absolutely level, dry, clean and firm.
- Any unevenness in the floor of more than 2mm over 1m must be properly evened out (4).
- When laying on mineral surfaces such as concrete, cement screed, anhydrite screed and stone tiles, the moisture must be measured first. The screed's residual moisture must not exceed the following values before laying: Cement screed; with underfloor heating < 1.8% CM; without underfloor heating < 2.0% CM Anhydrite screed; with underfloor heating < 0.3% CM; without underfloor heating < 0.5% CM.
- Carpeting is not a suitable surface to lay laminate flooring on and should therefore be removed before laying (5).
- Laminate flooring is laid "floating" and must not be glued, nailed or fixed to the sub-floor in any other way e.g. by means of door stoppers (6).
- We recommend you sort the planks before laying according to the required grain direction and any colour differences.
- Use the contents of opened packages immediately.
- The following components will be required for installation: Howdens Joinery foam underlay, Howdens waterproof membrane, spacing wedges, saw, pencil and tape measure. Other components that may be required include; Laminate floor joint sealant & White (PVA) glue D3 (7 & 8).

Note: In some instances, such as around door frames/Jambs, glue will be required along with the use of a pulling bar to compress the joint.

Depending on the area of use, there are three laying options:

1. Fast, glue-free laying. 2. Laying with laminate flooring joint sealant. Laminate flooring sealant permanently protects the floor from moisture effects acting from above. The floor can be taken up again and relaid. 3. Laying with glue also provides lasting protection against moisture, however the work is more complicated and time consuming and the flooring cannot be dismantled for possible relaying. This laying option is required in commercial applications.



Installation Instructions

Check sub floor for irregularities / unevenness. Moisture test must be carried out for all mineral based substrates (2.0 CM % for cement screed and 0.5 CM % for calcium sulphate screed). Check each and every panel for defects before and during laying. Remove all previous floor coverings. The sub floor must be clean, dry, firm and even. If laying over a stone/mineral sub floor, lay Howdens waterproof membrane (at least 0.2 mm thick PE foil) first as a "trough" (i.e. lay over the floor and extend ends and sides up the walls for a few centimetres).

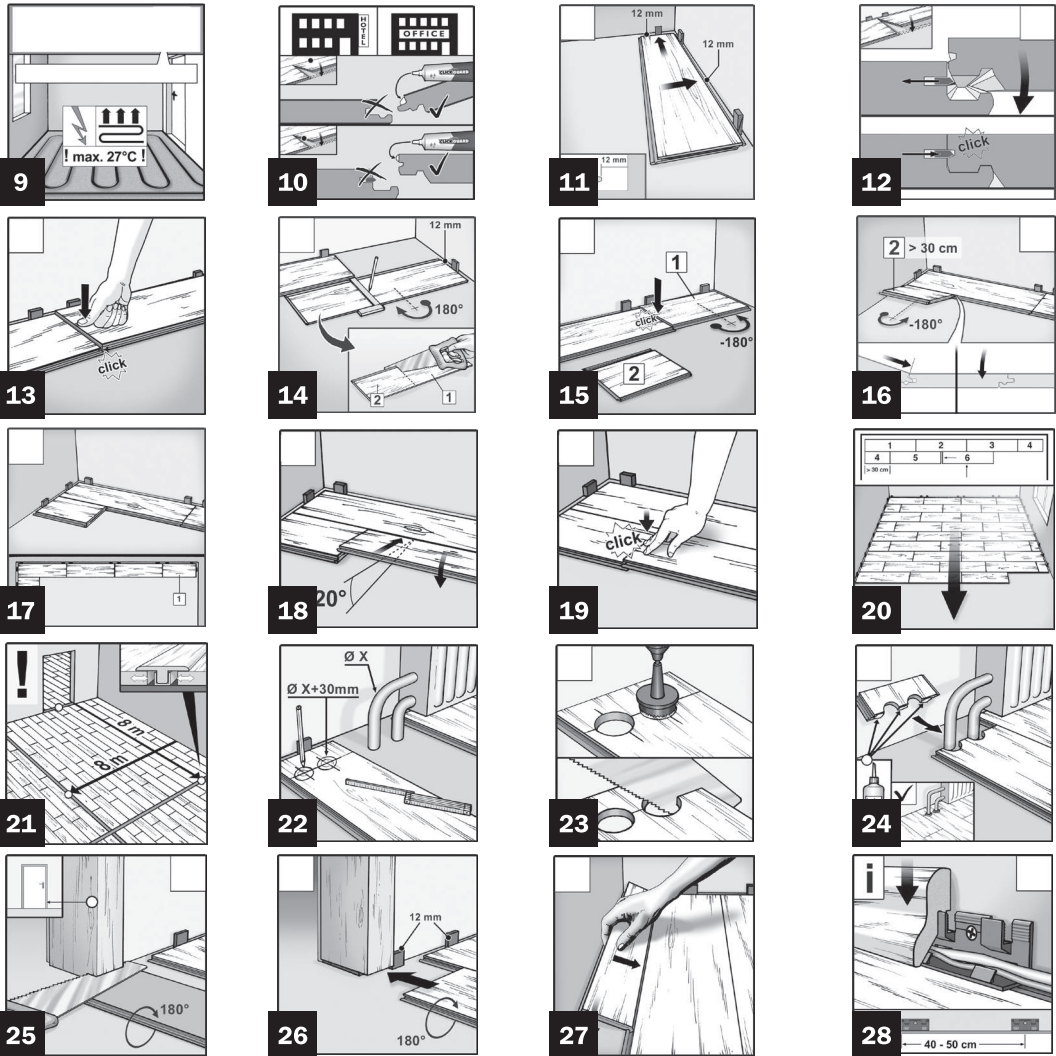
Underfloor heating: only lay flooring on underfloor heating with a max 27 °C (9) - Refer to manufacturers guidelines. Glue laminate laid in commercially used areas (10).

Note: In some instances such as around door frames/jambs & pipework, glue will be required along with the use of a pulling bar to compress the joint (24).

Lay the first row of planks with the tongue against the wall (11). Maintain at least 12mm distance between the edge of floor covering and fixed objects such as walls, using spacing wedges.

Follow the diagrams 11 to 28 for laying 'step by step' guide example

Note: Installation method below shows the flooring laid in a 'brick' style pattern. Different styles such as a '3 way stagger' pattern can be used to give a different look depending on preference.

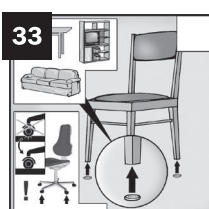
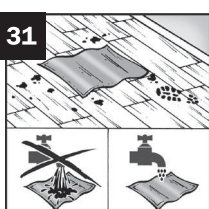


To Remove Flooring

To take the flooring up, lift the panels and move back (29). Slide the adjoining panels apart (30).

Care & Maintenance

- Put down a mat in entrance areas.
- Only use vacuum cleaners suitable for hard floors.
- Regular cleaning with a well wrung out cloth is advised (31). For really tough stains, we recommend using a little acetone. Avoid using excess water as it will damage your flooring and always clean up spillages immediately.
- Note: Standing water if left, may seep into the flooring joints and cause swelling.
- Do not use cleaning agents containing wax, polish or oil (32).
- Do not use steam mops/cleaners.
- Felt pads are recommended under chairs and heavy furniture (33).
- Use the floor exclusively under the recommended conditions.
- Put down a mat or rug to eliminate the risk of marks (gravel, soil, etc.) inside doorways and around sinks etc, to protect from spillages.
- Move furniture carefully to avoid damaging the laminated surface (33).



- Moveable furniture/chairs should be on soft castors or placed on a plastic mat. Furthermore, any single piece of furniture placed on the floor should not exceed 115kg in weight (33).