

Internal Middleweight *Pre-Finished Door Kits

Installation, Finishing & Care Instructions



It is important you read this leaflet before installing the door. The guidelines below will help ensure the door is fitted correctly and in a suitable environment. Failure to adhere to the instructions could invalidate any guarantee claims.

Check List

- Doors & linings must be stored on 3 level bearers
- Doors & linings must be kept dry at all times
- Do not install or store the doors & linings in newly plastered rooms
- Polythene wrapping should remain on the doors until immediately before installation
- Check the door & lining for defects and damage before installation, do not install if any defects or damage are found
- Any door or lining which has been worked on cannot be exchanged, with the exception of a door with a proven manufacturing defect
- Doors should be handled carefully with clean gloves and not dragged across each other or other surfaces

Components List

- 1 x door with female chrome hinge fitted
- 1 x Door lining kit:
 - 1 x Pre-machined primed lining with door stops
 - 3 x male chrome hinge
 - 1 x latch

*Door lining is supplied primed



1 Doors should be hung at the final fix stage, limiting the opportunity for damage or distortion (swelling) during the building process. Carefully remove packaging. Doors can be hung left or right hand. To reverse the handing, remove the female hinges and latches, and route through 180 degrees before re-fitting on the doors.



2a Fit the dust cap and latch, keep to the latch side MDF jamb liner.



2b Fit hinges to pre-machined recesses in hinge side of the jamb.

NOTE: DO NOT OVER TIGHTEN SCREWS



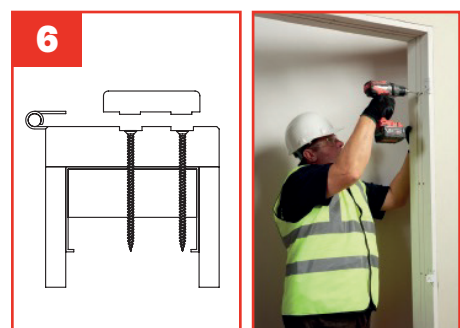
3 Use pre-drilled head as a template to pilot jambs. Jamb length is 2011mm to allow 15mm gap at bottom of door for floor covering. If floor covering already in place, cut down jamb to leave appropriate gap at bottom of door.



4 Offer the assembled frame up to the opening.



5 Use a spirit level to check that the Jambs are square and plumb, if necessary use packers to adjust.



6 Fix Jambs in place ensuring square, true and plumb

Finishing

The timber components used on the door are dried to specific moisture content during manufacture. Exposure to damp or moist conditions will cause swelling of the components, discolouration and consequent distortion of the door.

- These doors are supplied fully finished.
- The linings are supplied primed and require finishing with a water or solvent based satin paint, ensuring all cut outs for ironmongery are also finished. Howdens GAR0541 Moulded Door repair kit can be used to finish the door lining

Maintenance & Repairs

The surface finish will be highly resistant to the rigours of normal use and should usually only need regular light dusting with a soft cloth.

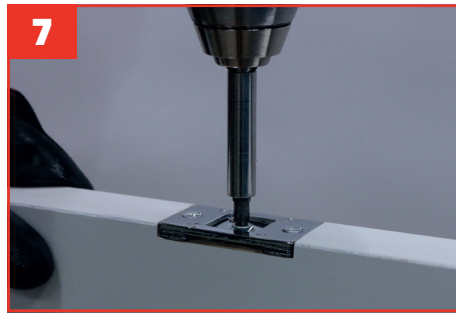
If sticky marks occur on the surface they can be removed with a dilute solution of warm soapy water. The offending area should be rubbed lightly and then completely dried immediately afterwards.

The use of cleaning materials containing abrasive compounds, solvents, acidic or caustic substances and any bleaches containing oxidising substances should be avoided as prolonged use may damage the painted surface.

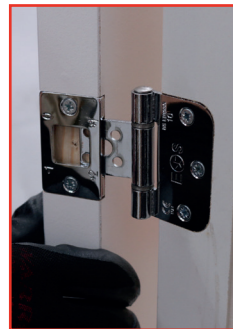
As a general recommendation furniture polishes containing silicones should be avoided as they can contaminate the finish surface and cause problems if the finish ever needs repairing. If scratches or blemishes in the paint surface require repairing use Howdens repair kit.

Conditions of Sale

Howdens Joinery will not be held Responsible for any incidental work or problems as a result of bad storage, handling or incorrect fitting and finishing of our doors. The foregoing does not affect your statutory rights.



Take the door provided and remove the screws and cams from each of the pre-fitted female hinges. Hinges are Pre-fitted for RH applications. Remove hinge and turn round.



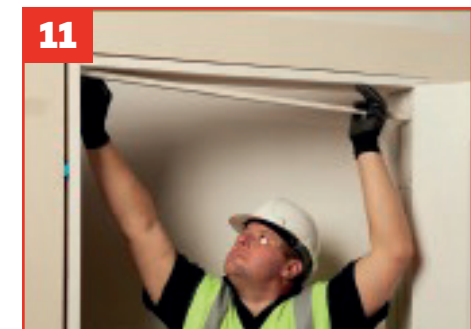
Hang the door by sliding it onto the male hinges that are pre-fitted on the frame.



Re-secure the cams back onto the hinges. set cam pin to '0'



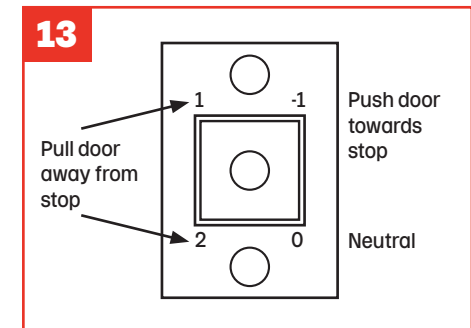
Test the door closes in the frame correctly, ensuring that the door does not bind or catch



Fix the MDF stops in position using appropriate grab adhesive and pins. Stops are reversible, and care should be taken to position these according to the thickness of the door (ie 35 or 40mm). Door stops may require cutting down to length of jambs.



Gap between the door edge and the frame should be between 2-4mm. Adjustments can be made using a cranking tool. To ease the door leaf towards or away from the jamb, apply slight pressure to the tops and bottoms of each hinge knuckle. Ensure that a consistent gap is achieved all around the door. Ensure all packers are pushed up into the gaps.



Hinge cam can be rotated so the pin points to one of the 4 numbers engraved on the hinge - this moves the door leaf towards or away from the door stop. The tongue in the latch keep rebate can also be adjusted to eradicate any rattle of the door in the frame.