

Technical Data – WKW0002

INSTRUCTIONS FOR USE – WKW0002 READ BEFORE USING													
MARKINGS	EN 388:2016 CAT II SIZE, STYLE &												
<table border="1" style="width: 100%; border-collapse: collapse;"> <thead> <tr> <th style="width: 50%; padding: 2px;">HAND SIZE DEFINED IN EN420:2003 + A1:2009</th> <th style="width: 50%; padding: 2px;">GLOVE SIZE</th> </tr> </thead> <tbody> <tr><td style="text-align: center; padding: 2px;">7</td><td style="text-align: center; padding: 2px;">7</td></tr> <tr><td style="text-align: center; padding: 2px;">8</td><td style="text-align: center; padding: 2px;">8</td></tr> <tr><td style="text-align: center; padding: 2px;">9</td><td style="text-align: center; padding: 2px;">9</td></tr> <tr><td style="text-align: center; padding: 2px;">10</td><td style="text-align: center; padding: 2px;">10</td></tr> <tr><td style="text-align: center; padding: 2px;">11</td><td style="text-align: center; padding: 2px;">11</td></tr> </tbody> </table>		HAND SIZE DEFINED IN EN420:2003 + A1:2009	GLOVE SIZE	7	7	8	8	9	9	10	10	11	11
HAND SIZE DEFINED IN EN420:2003 + A1:2009	GLOVE SIZE												
7	7												
8	8												
9	9												
10	10												
11	11												
EN 388:2016 <p style="margin-top: 5px;"> Protection from mechanical risks 3 Abrasion Resistance (0-4) 1 Cut Resistance (0-5) 3 Tear Resistance (0-4) 1 Puncture Resistance (0-4) X TDM Cut (ISO 13997) (A-F)* (X - NOT TESTED) </p> <p style="text-align: center; margin-top: 10px;">3 1 2 1 X</p>	CAT II <p style="font-size: small; margin-top: 10px;"> * For dulling during cut resistance test (6.2), the coupe test results are only indicative while the TDM cut resistance test (6.3) is the reference performance result. Testing carried out on palm material. </p>												
<p style="font-size: x-small;"> These gloves have been designed to protect against primarily mechanical risks as defined by the PPE regulation 2016/425 and directive 89/686/EEC. They comply with the relevant technical European Standards. They are labelled accordingly and follow the requirements of PPE directives and subsequent amendments. 'Howden Joinery Ltd.' will not be held responsible for the improper use of the gloves for non-designated purposes. To determine if these gloves are appropriate for the specific use assess your actual workplace conditions. </p>													
CLEANING If appropriate, sanitisation may take place under lukewarm water using soap. Do not use Chloride bleaches. 'Howden Joinery Ltd' cannot accept any liability if the gloves do not have the same level of performance after washing.													
<p style="text-align: center; font-weight: bold; font-size: small;">CARE INSTRUCTIONS</p> <p style="font-size: x-small;"> Storage: Store the gloves in their original packaging. Store in a cool dry place away from direct sunlight. Keep away from naked flames or ozone sources. When stored as recommended, these gloves will not change in mechanical properties for up to 3 years from date of manufacture. The service life of the glove cannot be specified and depends on the responsibility of the user and the application to establish suitability of the glove for its intended use. Protection against hazards or risks not stated in this document are not warranted. The level of performance is only stated for new gloves. Both new and old gloves should be thoroughly inspected for damage prior to use to insure no damage is present. The gloves should not be left in a contaminated condition if they are intended to be used further. If further use is intended, the gloves should be cleaned as much as possible with the information provided. You are advised to retain this document and packaging for future reference. This glove is not liquid proof. All sizes comply with EN420:2003 + A1:2009 for comfort fit and dexterity. </p>													
<p style="text-align: center; font-weight: bold; font-size: small;">PRECAUTIONS FOR USE</p> <p style="font-size: x-small;"> NEVER USE THESE GLOVES WITH CHEMICALS. The gloves should never come into contact with a naked flame. DO NOT SUBJECT TO HIGH SPEED OR SERRATED BLADES Gloves should not be used when there is a risk of entanglement with moving machine parts. Before use, check the gloves for any defects of damage. Avoid wearing contaminated, damaged, worn or dirty gloves. </p>													
<p style="text-align: center; font-weight: bold; font-size: small;">ALLERGIES/CONSTITUENTS</p> <p style="font-size: x-small;"> This model does not contain any substances at levels that are known to, or suspected to, affect user hygiene or health. Some gloves may contain ingredients which are known to be a possible cause of allergies persons who may develop allergic and/or irritant contact reactions. If an allergic and/or irritant should occur please seek medical advice immediately. WARNING: These gloves contain natural rubber latex which may cause an allergic reaction. If affected discontinue use immediately and seek medical help. </p>													
EC type examination carried out by: CTC, 4 rue Herman Frenkel, 69367 LYON, Cedex 07, FRANCE (Notification Body 0321)													
For more information please contact technical department at Howden Joinery Ltd: Thorpe Road, Howden, East Yorkshire, DN14 7PA www.howdens.com/hardware-collection/tools-accessories/work-gloves													



HOWDENS
JOINERY CO.

WKW0002
18 Gauge Blue Builders Gloves
Size: 9 (Large)
Lightweight for Increased Dexterity
Quantity: 1
Batch:

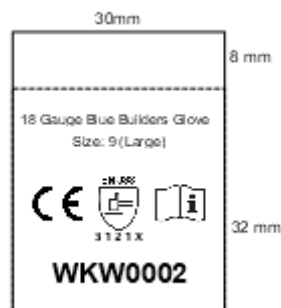
150 mm



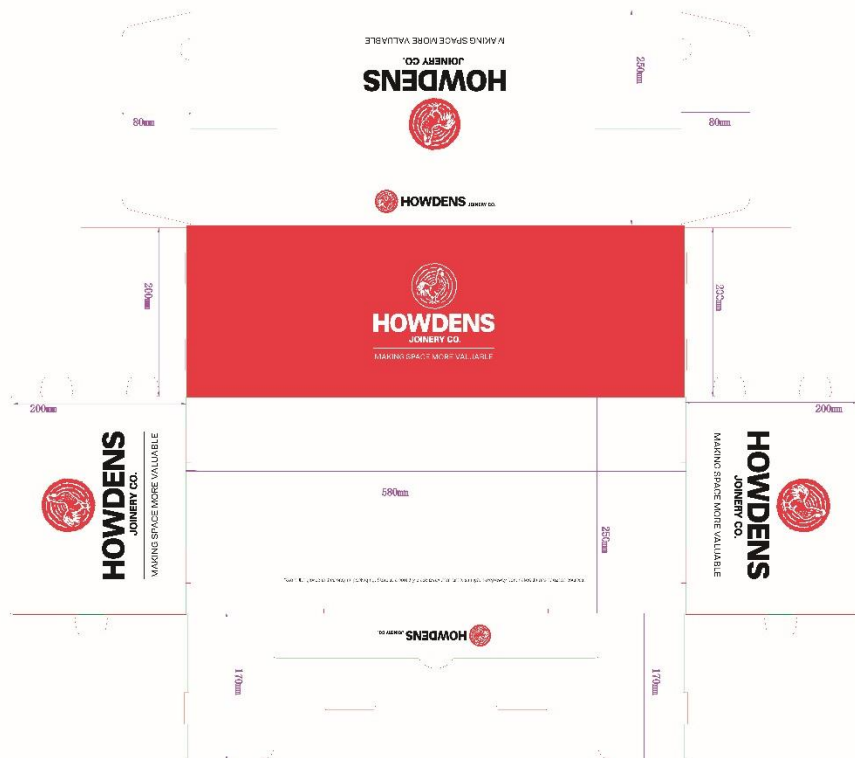
WARNING: THIS PRODUCT CONTAINS
NATURAL RUBBER LATEX

www.howdens.com
HOWDEN JOINERY LTD
Thorpe Road, Howden
East Yorkshire, DN14 7PA

80 mm



580*250*200mm



HOWDENS
JOINERY CO.

MAKING SPACE MORE VALUABLE

**18 Gauge Blue Builders Glove
WKW0002**


No of item per box: 50

No of boxes per outer: 2

**OPEN CAREFULLY. DO NOT USE KNIFE TO OPEN
STORE IN COOL, DRY PLACE OUT OF DIRECT SUNLIGHT**




HOWDENS
JOINERY CO.
EN388:2016
CAT. II Size 9
Art. PU3101 3121X


HOWDENS
JOINERY CO.
EN388:2016
CAT. II Size 9
Art. PU3101 3121X