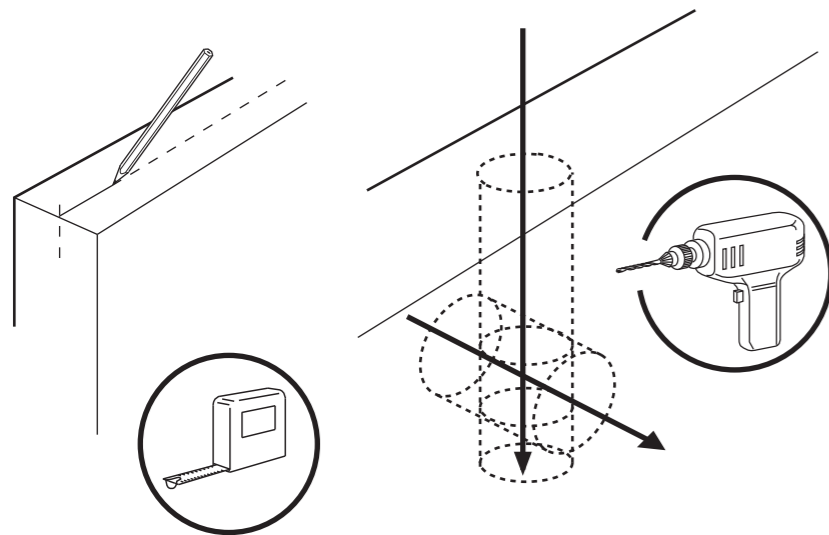


Door Pair Latch Rebating Instructions

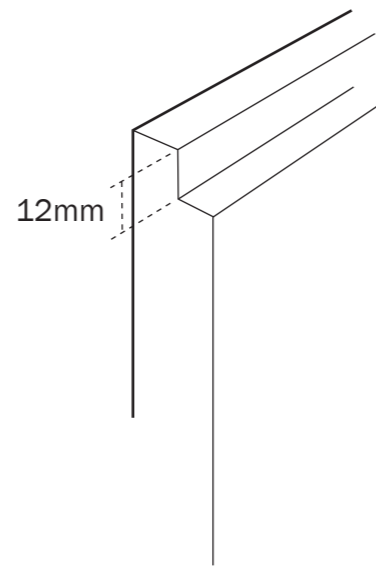
LATCHREB

Follow the step by step guide for fitting tubular latches to a door pair.

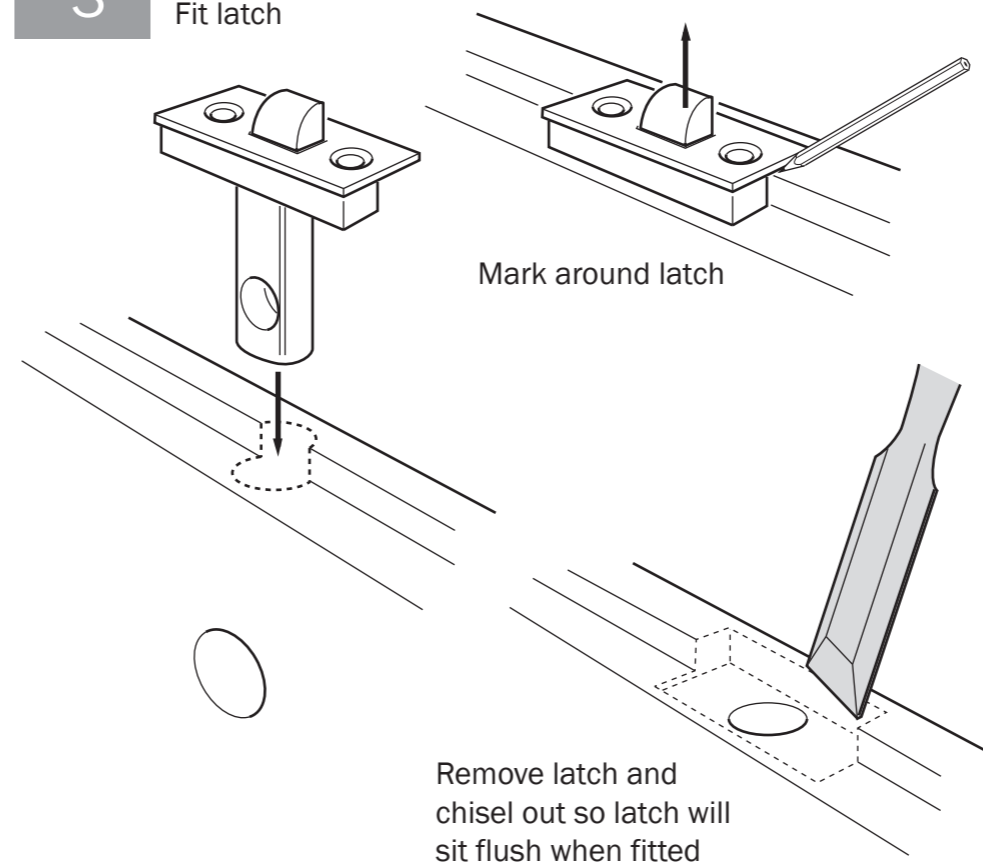
1 Mark centre line & drill hole for tubular latch and handle



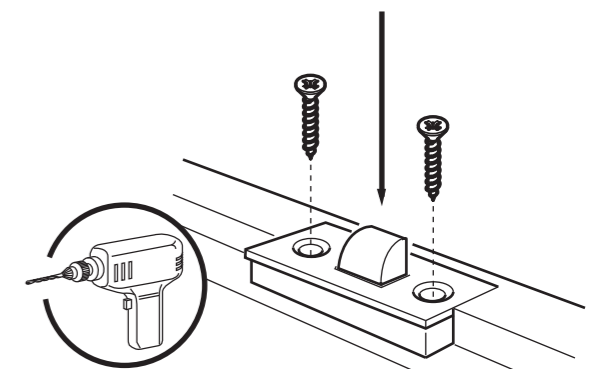
2 Rebate adjoining door sides



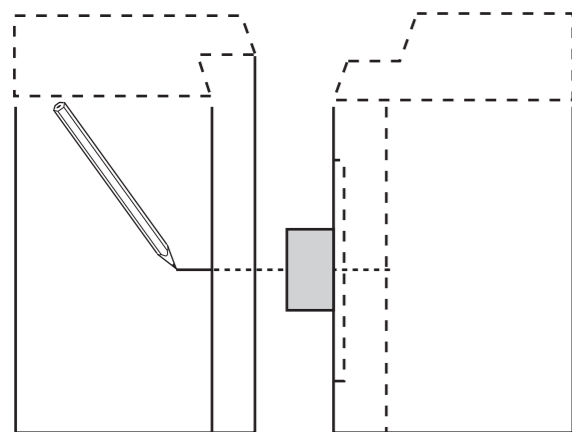
3 Fit latch



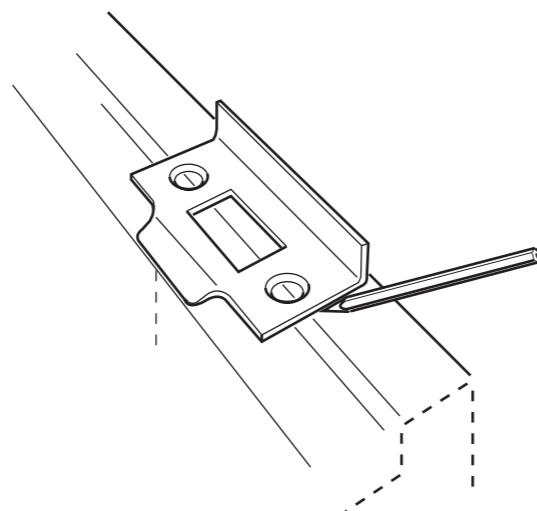
4 Fit latch to the side
Pilot drill fixing holes and secure with screws



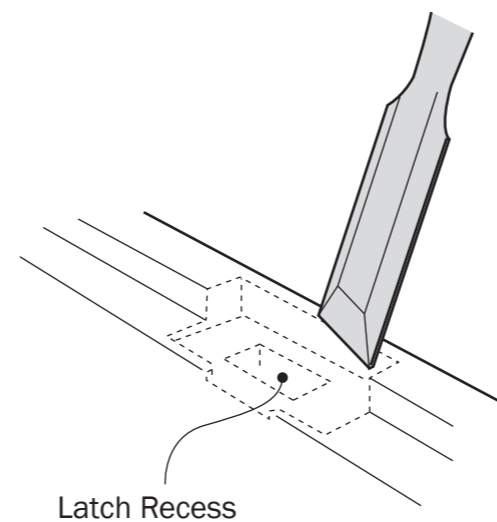
5 Align both doors and mark the centre line From the fitted latch tongue.



6 Position the latch receiver plate over the marked centre line. Align drill holes for fixing screws with the centre line. Mark around plate on the top rebate section.



7 Remove receiver plate and chisel out to shape.
Note: Ensure recess is made for latch.



8 Fit the receiver plate and pilot drill the screw fixing positions. Secure the plate using screws.

